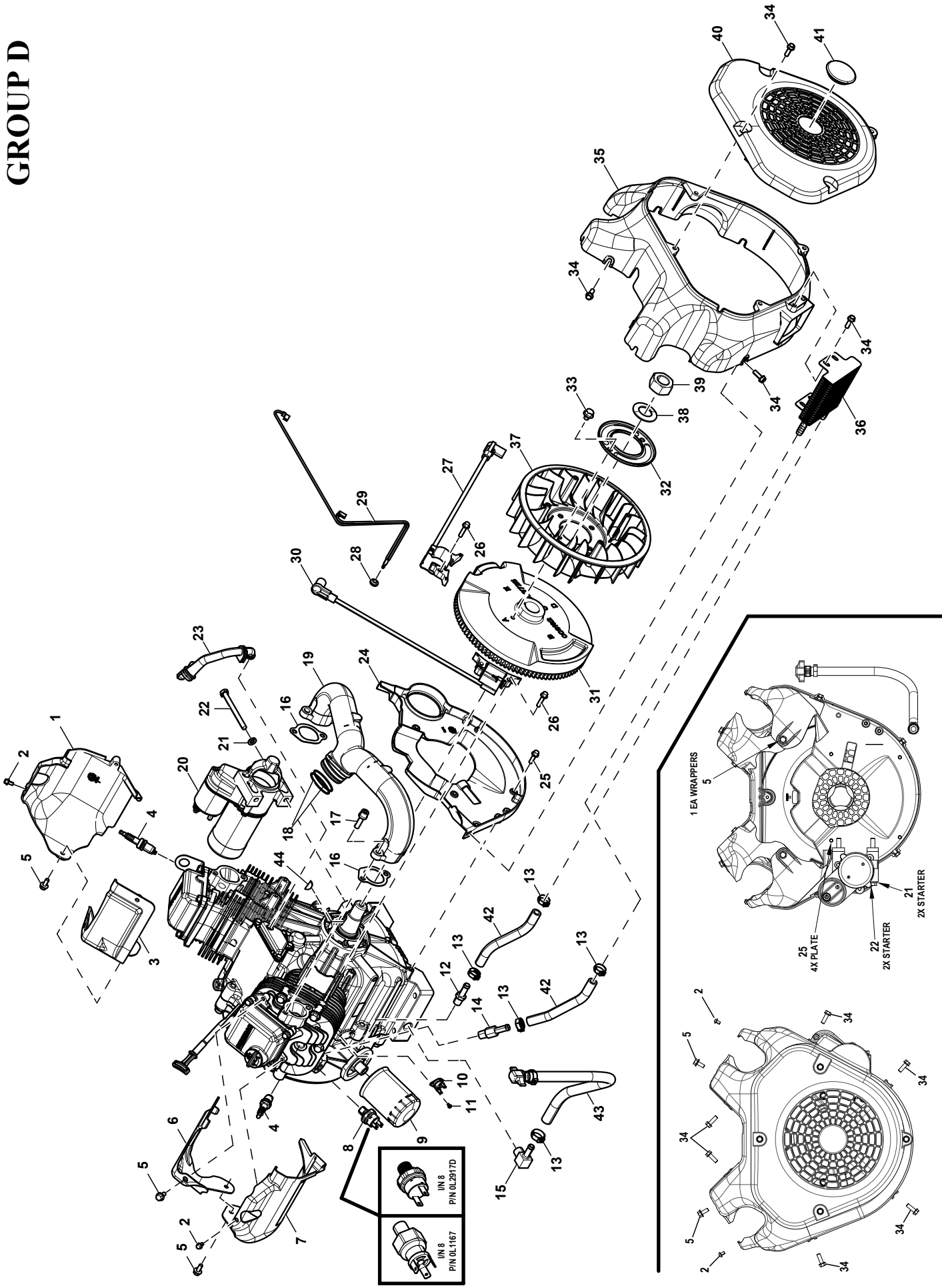


# GROUP D

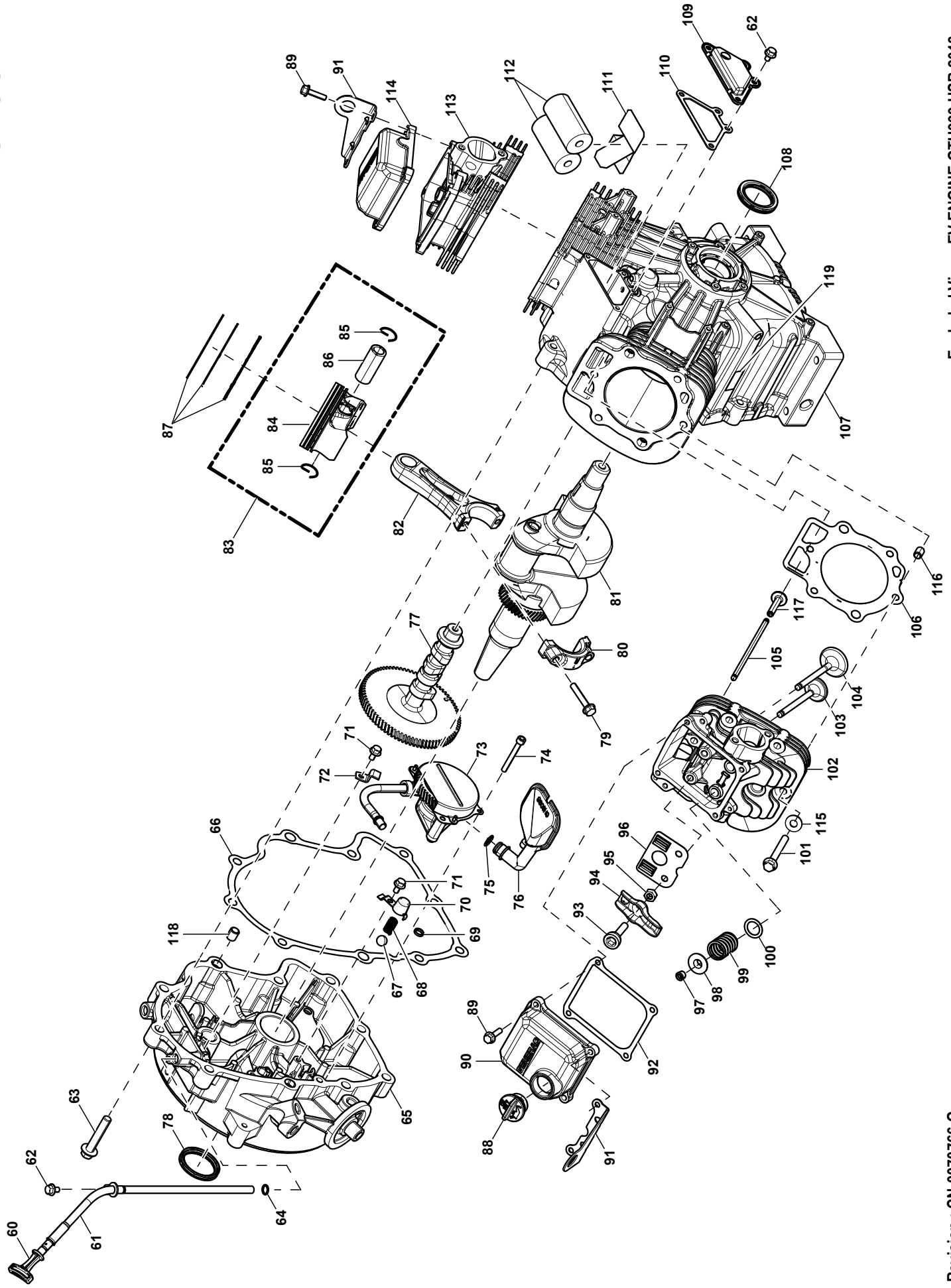


Exploded View : EV ENGINE GTH999 HSB 2018  
Drawing No. : 10000031839

## FASTENER DETAIL

Revision : CN-0070766-G  
Date : 5/31/23

# GROUP D



**EXPLODED VIEW: EV ENGINE GTH999 HSB 2018**

**DRAWING #: 10000031839**

**GROUP D**

**APPLICABLE TO:**

ITEM	PART#	QTY.	DESCRIPTION
PAGE 1			
1	1000002993	1	WRAPPER OUTSIDE CYL 1 GTH999 HSB
2	0E6043	2	SCREW HDPHT M5-0.8 X 8 ZP
3	1000002992	1	WRAPPER INSIDE CYL 1 GTH999 HSB
4	0G0767A	2	SPARK PLUG GAP: 0.040"
5	0G1705	4	SCREW HHFC M6-1.0 X 14 G8.8
6	1000002995	1	WRAPPER INSIDE CYL 2 GTH999 HSB
7	1000002994	1	WRAPPER OUTSIDE CYL 2 GTH999 HSB
8	0L2917D	1	LOW OIL PRES SWITCH 10 PSI NO
	0L1167	1	SW OIL PRESS 10 PSI NONC (10/13KVA AUS ONLY)
9	070185E	1	OIL FILTER 90 LOGO ORNG-CAN
10	1000000290	1	THERMAL SWITCH 293 F NC
11	0F2094	2	SCREW PPHMS M3-0.5 X 6
12	0L6345	1	BARB STR SAE 1/4NPT X 3/8 ST-Z
(1)13	0G3662B	5 / 3	CLAMP HOSE STEPLESS 18.5
14	0L6346	1	BARB STR SAE 1/4NPT X 3/8 EXT
15	10000006153	1	BARB EL SAE 3/8NPT X 3/8 ST-Z
16	0C3043	2	GASKET INTAKE PORT GT990
17	0G3730A	4	SCREW SHC M8-1.25 X 30 G8.8 SEMS
18	0K0710	2	O-RING 1-3/4 X 1/16 VITON 031
19	0J9765	1	MANIFOLD INT GTH999 2X
20	0E9323	1	STARTER MOTOR GEAR REDUCED 1KW
21	G022129	2	WASHER LOCK SPRING 5/16 ZC
22	G061906	2	SCREW HHC M8-1.25 X 85 C8.8
23	0L6322	1	BREATHER HOSE
24	10000011061	1	BACKPLATE GTH999 PLASTIC
25	0D6029	4	SCREW HHTT M6-1.0 X 16 ZYC
26	0G3111	4	SCREW HHTT M6-1.0 X 25 ZINC
27	10000004916	1	ASSY IGN COIL R128.3 X 335 NO GROM
28	0K1307	1	GROMMET 3/8 X 1/16 X 1/4 EHC
29	0K1280	1	ASSY GROUNDING WIRE 2013 HSB
30	10000004931	1	ASSY IGN COIL R128.3 X 390 NO GROM
31	A0000513160	1	FLYWHEEL ASSY WITH GEAR 255MM 33 DEG 4MM KEY
32	0C3032	1	PLATE, FAN GV-990
33	0H4957	2	SCREW HHFCS M8-1.25 X 10 C8.8
(1)34	0C9764	12 / 8	SCREW HH HI-LO 1/4-15 X 3/4
35	10000009296	1	BLOWERHOUSING GTH999 HSB (USED WITH COOLER)
	10000009335	1	BLOWERHOUSING GTH999 HSB (USED W/O COOLER)
(2)36	0E9506	1	OIL COOLER, GT990
37	0C3031	1	FAN FLYWHEEL NYLON GTV990
38	0C3033	1	WASHER BELLEVILLE 25MM BOLT
39	0C3034	1	NUT HEX M24-2.0 G8 YEL CHR
40	10000029058	1	COVER BLOWERHOUSING GTH999 HSB
41	10000029070	1	BLWR HSG PLUG
42	0F0452C	2	HOSE 3/8 300DEG 6 LONG OIL (6"LG) (USED WITH COOLER)
	10000001103	1	HOSE 3/8"ID 300DEG X 9" LG OIL (9"LG) (USED W/O COOLER)
43	0H8131	1	ASSY HOSE OIL DRAIN 16LG ORG
44	G082774	1	KEY WOODRUFF 4 X 19D

NOTES (UNLESS OTHERWISE SPECIFIED):

(1) QTY. REQ. WITH OIL COOLER / QTY. REQ. WITHOUT OIL COOLER.

(2) IF EQUIPPED.

**PAGE 2**

60	0H6859L	1	ASSY DIPSTICK GTH990 HSB
61	A0000303017	1	TUBE DIPSTICK GTH999 30 DEG
62	0D6147	5	SCREW HHFCS M6-1.0 X 10 G8.8 ZY
63	0C3006	10	SCREW HHFC M10-1.5 X 55 G8.8
64	0C3027	1	O-RING 3/8 X 1/2 NITRILE
65	10000037523	1	GEARCOVER/ADAPTOR 315 ALT MACH
66	0C2977	1	GASKET CCASE GV990
67	0C3010	2	BALL, 1/2D OIL RLF GV

**EXPLODED VIEW: EV ENGINE GTH999 HSB 2018**

**DRAWING #: 10000031839**

**GROUP D**

**APPLICABLE TO:**

ITEM	PART#	QTY.	DESCRIPTION
68	0C3009	2	SPRING,OIL RLF GV990
69	0C5943	1	SEAL OIL PASSAGE GT
70	0C3011	2	COVER,OIL RLF GV-990
71	0G0919	3	SCREW HHFCS M6-1 X 12 G8.8
72	0C5998	1	CLAMP, OIL TUBE
73	10000047784	1	ASSY OIL PUMP SKYFALL W/O O-RING
74	0G6431	2	SCREW SHC M6-1.0 X 50 G8.8
75	0E8152	1	O-RING .49 ID X .07 THK 70DURO
76	0E6098	1	SCREEN OIL PICKUP 45DEG GTH990
77	10000002227	1	CAMSHAFT MACHINING 6 LIFT
	10000002213	1	CAMSHAFT MACHINING 6.9 LIFT (22KW UNITS ONLY)
78	0K2035	1	SEAL CRANKSHAFT PTO SIDE
79	G071979	4	SCREW HHFC M8-1.25 X 42LG
80	0K6413	2	CONROD CAP GT999 HO MACH
81	A0000707267	1	ASSY CRANKSHAFT 78.58MM HSB TAPER 5MM KEY
82	0K6411	2	CONROD ROD GT999 HO MACH
83	0K6418	2	ASSY PISTON FLAT TOP 90 DIA
84	0K6404	2	PISTON FLAT TOP 90 DIA
85	G071983	4	RETAINER PISTON PIN 20
86	0K6397	2	WRIST PIN 999 20X12X49
87	0G2565	2	RING SET PISTON DIA 90
88	093064A	1	ASSY, OIL FILL CAP
89	G080318	8	SCREW HHFC M6-1.0 X 25 FTH G8
90	10000008497	1	ROCKER COVER GT999 W-FILL PB MCHND
91	10000029025	2	BRACKET LIFT
92	A0002791673	2	GASKET ROCKER COVER 80MM X 91MM
93	G072694	4	STUD ROCKER ARM PIVOT LF
94	A0002527982	4	ROCKER ARM RATIO 1.5:1 HLA
95	0D3998	4	NUT HEX M8-1.0 G8 YEL CHR
96	0J9679	2	PUSH ROD GUIDE PLATE
97	G086515	8	KEEPER,VLV SPRING
98	0D2274	4	RETAINER,VALVE SPRING
99	0D3867	4	SPRING VALVE GT-990
	0L5489	4	SPRING VALVE GT999 (22KW UNITS ONLY)
100	0C5371	4	WASHER VALVE SPRING
101	0C2976	12	SCREW HHFC M8-1.25 X 65 G12.9
102	10000011472	1	ASSY HEAD CYL #2 GT-999 22KW
103	G086516	2	VALVE EXHAUST
	0K1478	2	VALVE EXHAUST GT999 (22KW UNITS ONLY)
104	0C2229	2	VALVE INTAKE
105	0D9853D	4	PUSHROD 147 LENGTH GT-760/990
106	0C2978	2	GASKET CYLINDER HEAD GTV990
107	10000038352	1	CRANKCASE ASSEMBLY W/PLUGS
108	0K1534	1	SEAL CRANKSHAFT FLYWHEEL SIDE
109	0G9100	1	ASSY,BREATHER DUAL VALVE H990
110	0C3005	1	GASKET,BREATHER COVER GT-990
111	0L6047	1	BREATHER DIVERTER GTH999
112	0E3372C	2	SEPARATOR, OIL BREATHER GT530
113	10000011471	1	ASSY HEAD CYL #1 GT-999 22KW
114	10000008426	1	ROCKER COVER GT999 NO FILL PB MCHND
115	10000004145	12	WASHER HEAD BOLT M8 (22KW UNITS ONLY)
116	078699B	4	SLEEVE DOWEL PIN 12 DIA.
117	G083897	4	TAPPET SOLID
118	078699C	2	SLEEVE DOWEL PIN DIA.14
119	G020527	1	DECAL DATA ENG-SIZE