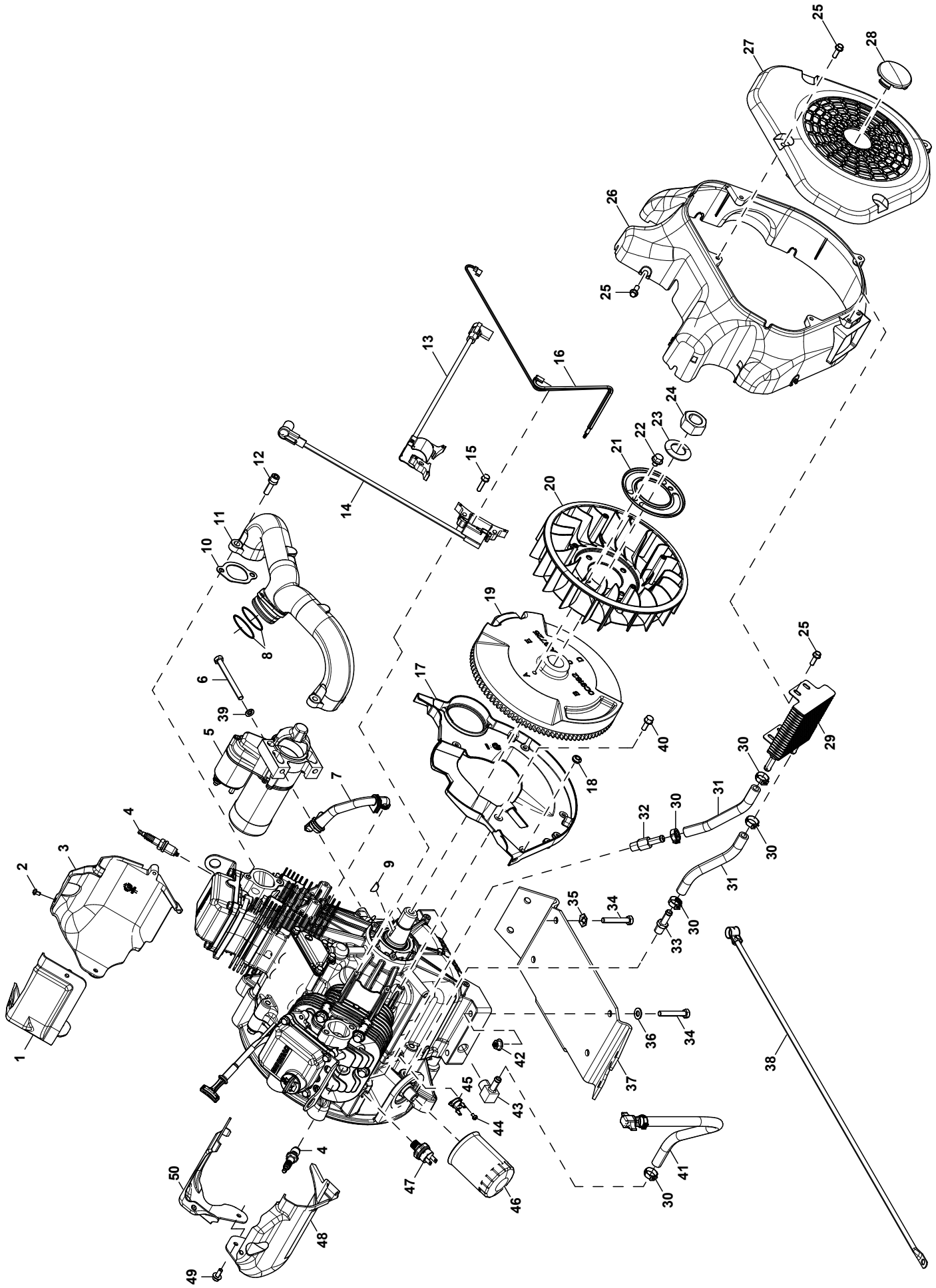
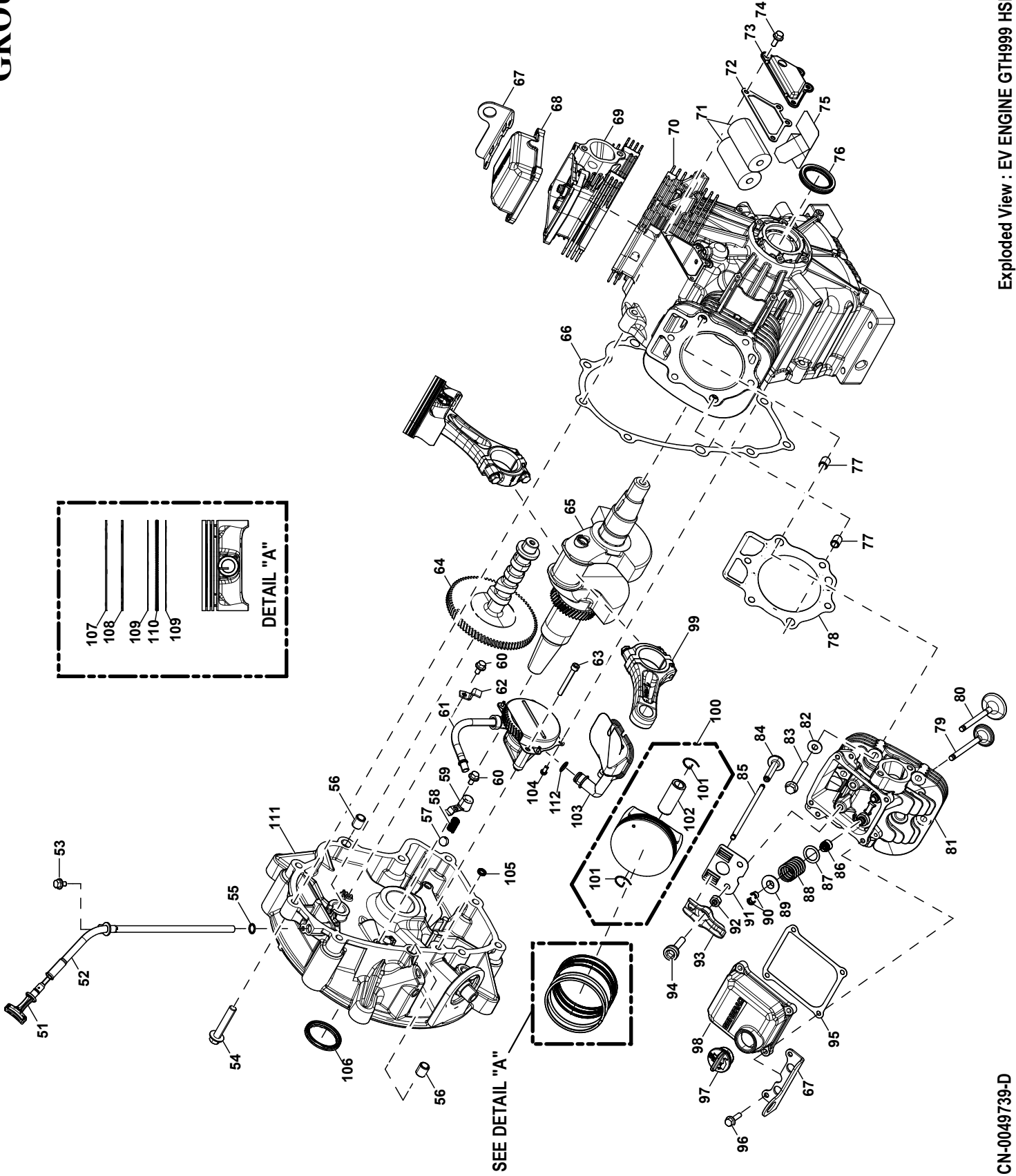


GROUP D



GROUP D



EXPLODEDVIEW: EV ENGINE GTH999 HSB 315 ALT

DRAWING#: A0000347496

GROUP D

APPLICABLE TO:

ITEM	PART#	QTY.	DESCRIPTION
1	10000002992	1	WRAPPER INSIDE CYL 1 GTH999 HSB
2	0E6043	2	SCREW HDPHT M5-0.8 X 8 ZP
3	10000002993	1	WRAPPER OUTSIDE CYL 1 GTH999 HSB
4	0G0767A	2	SPARK PLUG GAP: 0.040"
5	0E9323	1	STARTER MOTOR GEAR REDUCED 1KW
6	G061906	2	SCREW HHC M8-1.25 X 85 C8.8
7	0L6322	1	BREATHER HOSE
8	0K0710	2	O-RING 1-3/4 X 1/16 VITON 031
9	G082774	1	KEY, WOODRUFF 4 X 19D
10	0C3043	2	GASKET INTAKE PORT GT990
11	0J9765	1	MANIFOLD INT GTH999 2X
12	0G3730A	4	SCREW SHC M8-1.25 X 30 G8.8 SEMS
13	10000004916	1	ASSY IGN COIL R128.3 X 335 NO GROM
14	10000004931	1	ASSY IGN COIL R128.3 X 390 NO GROM
15	0G3111	4	SCREW HHTT M6-1.0 X 25 ZINC
16	0K1280	1	ASSY GROUNDING WIRE 2013 HSB
17	10000011061	1	BACKPLATE GTH999 PLASTIC
18	022717A	1	GROMMET 3/8 X 1/16 X 1/4
19	A0000513160	1	FLYWHEEL ASSY WITH GEAR 255MM 33 DEG 4MM KEY
20	0C3031	1	FAN FLYWHEEL NYLON GTV990
21	0C3032	1	PLATE, FAN GV-990
22	0H4957	2	SCREW HHFCS M8-1.25 X 10 C8.8
23	0C3033	1	WASHER BELLEVILLE 25MM BOLT
24	0C3034	1	NUT HEX M24-2.0 G8 YEL CHR
25	0C9764	14	SCREW HH HI-LO 1/4-15 X 3/4
26	10000009296	1	BLOWERHOUSING GTH999 HSB
27	10000029058	1	COVER BLOWERHOUSING GTH999 HSB 51 ID
28	10000029070	1	BLWR HSG PLUG
29	10000034627	1	OIL COOLER 300 BTU
30	0G3662B	5	CLAMP HOSE STEPLESS 18.5
31	0F0452C	2	HOSE 3/8 300DEG 6 LONG OIL
32	0L6346	1	BARB STR SAE 1/4NPT X 3/8 EXT
33	0L6345	1	BARB STR SAE 1/4NPT X 3/8 ST-Z
34	G051731	4	SCREW HHC M8-1.25 X 50 C8.8
35	0C3168	1	WASHER LOCK SPECIAL 5/16
36	G022145	3	WASHER FLAT 5/16-M8 STEEL ZINC
37	10000019150	1	ST03 MOUNTING BRKT HSB 816/999 ENG
38	0J9420B	1	CABLE BATT BLK #6 30.0" NEG
39	G022129	2	WASHER LOCK M8-5/160
40	0D6029	4	SCREW HHTT M6-1.0 X 16 ZYC
41	0H8131	1	ASSY HOSE OIL DRAIN ORG
42	10000034692	4	NUT HEX FLANGE M8-1.25 LOCK NYLON
43	10000006153	1	BARB EL SAE 3/8NPT X 3/8 ST-Z
44	0F2094	2	SCREW PPHMS M3-0.5 X 6
45	10000024110	1	THERMAL SWITCH 310 F NC
46	070185E	1	OIL FILTER 90 LOGO ORNG-CAN
47	0L2917D	1	LOW OIL PRES SWITCH 10 PSI NO
48	10000002994	1	WRAPPER OUTSIDE CYL 2 GTH999 HSB
49	0G1705	4	SCREW HHFC M6-1.0 X 14 G8.8
50	10000002995	1	WRAPPER INSIDE CYL 2 GTH999 HSB
51	0H6859L	1	ASSY DIPSTICK GTH990 HSB
52	A0000303017	1	TUBE DIPSTICK GTH999 30 DEG
53	0D6147	1	SCREW HHFCS M6-1.0 X 10 G8.8 ZY
54	0C3006	10	SCREW HHFC M10-1.5 X 55 G8.8
55	0C3027	1	O-RING, 3/8 X 1/2 NITRILE
56	078699C	2	SLEEVE DOWEL PIN DIA.14
57	0C3010	1	BALL,1/2D OIL RLF GV
58	0C3009	1	SPRING,OIL RLF GV990
59	0C3011	1	COVER,OIL RLF GV-990
60	0G0919	2	SCREW HHFCS M6-1 X 12 G8.8
61	10000047784	1	ASSY OIL PUMP SKYFALL W/O O-RING
62	0C5998	1	CLAMP, OIL TUBE
63	0G6431	2	SCREW SHC M6-1.0 X 50 G8.8
64	10000002213	1	CAMSHAFT MACHINING 6.9 LIFT
65	A0000417204	1	CRANKSHAFT ASSY HORIZONTAL TAPER

EXPLODEDVIEW: EV ENGINE GTH999 HSB 315 ALT

DRAWING#: A0000347496

GROUP D

APPLICABLE TO:

ITEM	PART#	QTY.	DESCRIPTION
66	0C2977	1	GASKET CCASE GV990
67	10000029025	2	BRACKET LIFT
68	10000008426	1	ROCKER COVER GT999 NO FILL PB MCHND
69	10000011471	1	ASSY HEAD CYL #1 GT-999 22KW
70	10000038352	1	CRANKCASE ASSEMBLY W/PLUGS
71	0E3372C	2	SEPARATOR, OIL BREATHER GT530
72	0C3005	1	GASKET,BREATHER COVER GT-990
73	0G9100	1	ASSY,BREATHER DUAL VALVE H990
74	0G0926	4	SCREW HHFCS M6-1 X 16 G8.8
75	0L6047	1	BREATHER DIVERTER GTH999
76	0K1534	1	SEAL CRANKSHAFT FLYWHEEL SIDE
77	078699B	4	SLEEVE DOWEL PIN 12 DIA.
78	0C2978	2	GASKET CYLINDER HEAD GTV990
79	0K1478	2	VALVE EXHAUST GT999
80	0C2229	2	VALVE INTAKE
81	10000011472	1	ASSY HEAD CYL #2 GT-999 22KW
82	10000004145	12	WASHER HEAD BOLT M8
83	0C2976	12	SCREW HHFC M8-1.25 X 65 G12.9
84	G083897	4	TAPPET SOLID
85	0D9853D	4	PUSHROD 147 LENGTH GT-760/990
86	10000021593	2	VALVE STEM SEAL 6 X 12.7
87	0C5371	4	WASHER VALVE SPRING
88	0L5489	4	SPRING VALVE GT999
89	0D2274	4	RETAINER,VALVE SPRING
90	G086515	8	KEEPER,VLV SPRING
91	0J9679	2	PUSH ROD GUIDE PLATE
92	0D3998	4	NUT HEX M8-1.0 G8 YEL CHR
93	0D5313	4	ROCKER ARM GT990 RATIO 1.5:1
94	G072694	4	STUD ROCKER ARM PIVOT LF
95	0C2979	2	GASKET, VLV COVER GV
96	G080318	8	SCREW HHFC M6-1.0 X 25 FTH G8
97	093064A	1	ASSY, OIL FILL CAP
98	10000008497	1	ROCKER COVER GT999 W-FILL PB MCHND
99	0K6410	2	ASSY CONROD GT999 HO
100	0K6418	2	ASSY PISTON FLAT TOP 90 DIA
101	G071983	4	RETAINER PISTON PIN 20
102	0K6397	2	WRIST PIN 999 20X12X49
103	0E6098	1	SCREEN OIL PICKUP 45DEG GTH990
104	0F5458	1	SCREW HH HI-LO #10 X 3/8
105	0C5943	1	SEAL OIL PASSAGE GT
106	0K2035	1	SEAL CRANKSHAFT PTO SIDE
107	0G2565A	2	RING PISTON TOP DIA 90
108	0G2565B	2	RING PISTON 2ND DIA 90
109	0G2565C	4	RING PISTON OIL RAIL DIA 90
110	0G2565D	2	RING PISTON OIL SPACER DIA 90
111	10000037523	1	GEARCOVER/ADAPTOR 315 ALT MACH
112	0E8152	1	O-RING .49 ID X .07 THK 70DUR0