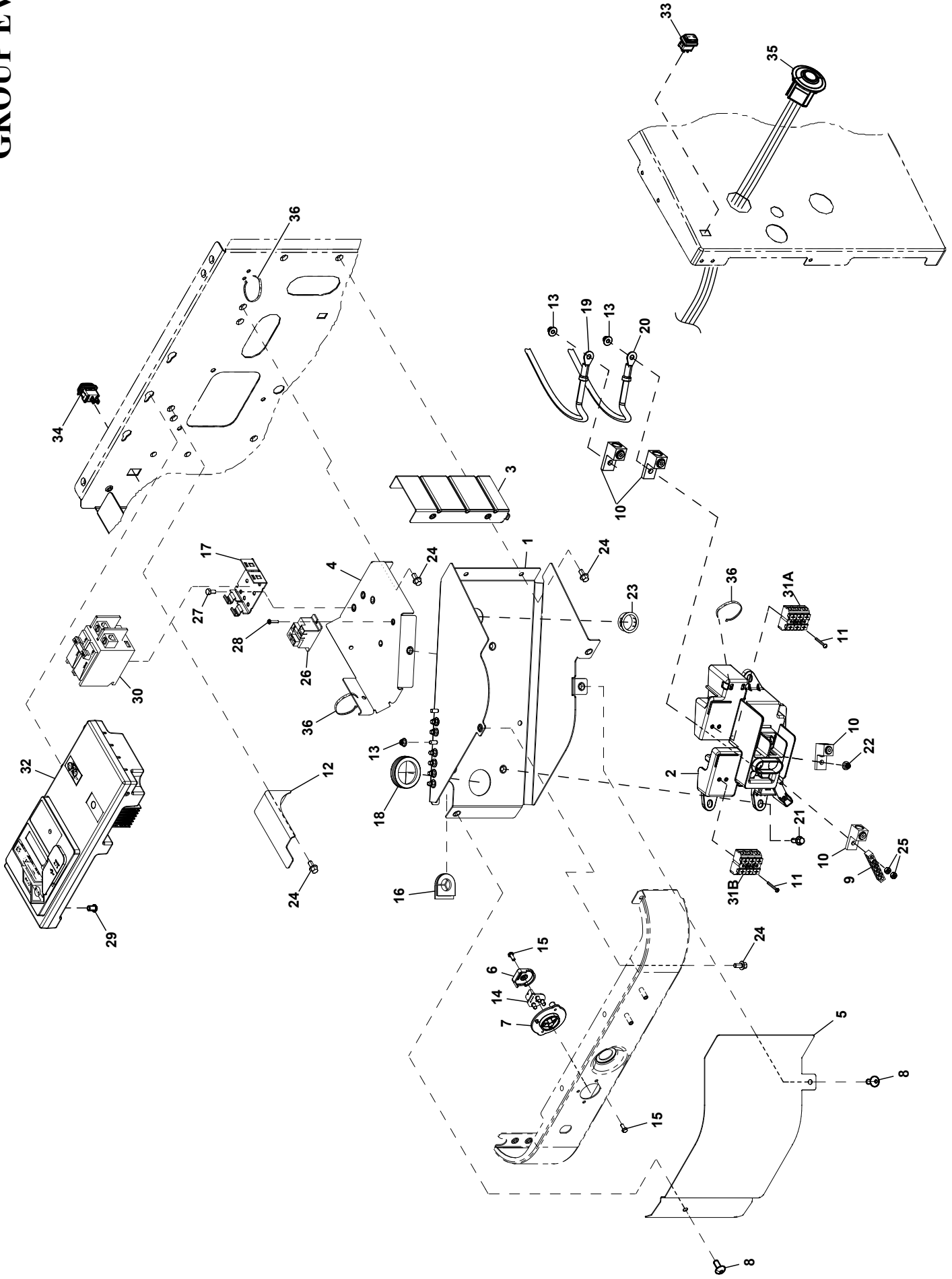


GROUP EV



EXPLODED VIEW: EV CONTROL PANEL 60HZ

DRAWING #: A0000161376

GROUP EV

| ITEM | PART# | QTY. | DESCRIPTION |
|------|-------------|------|--|
| 1 | 0L6647 | 1 | CONN BOX W/WLD STUD AND PEMS |
| 2 | A0002033902 | 1 | CUSTOMER CONNECTION PNL LGE LUG CUTOUT |
| 3 | 0L4262 | 1 | BACK SUPPORT (10KW) |
| 4 | 0L4261 | 1 | CIRCUIT BREAKER BRACKET (10KW) |
| | 0L3009 | 1 | CIRCUIT BREAKER BRACKET (13, 16-24KW, 15KW ECOGEN) |
| 5 | 0L4260 | 1 | ACCESS PANEL |
| 6 | 0L4255 | 1 | LED BACK COVER |
| 7 | 0L4254 | 1 | LED PLATE |
| 8 | 10000042784 | 2 | SCREW SWT M6-1.0 X 16 ZK W/NO WASHER |
| 9 | 0K2888 | 1 | GROUND BAR (4) 4-14 AWG ALUM |
| 10 | 0K0481 | 4 | LUG SLDLSS #2-#14 AL |
| 11 | 10000001410 | 4 | SCREW BHSC M3-0.5 X 25MM |
| 12 | 0J8939 | 1 | BACK CNTRLR SUPP BRKT |
| 13 | 0H3535 | 9 | NUT FLANGE M5-0.8 NYLOCK (13, 16-24KW, 15KW ECOGEN) |
| | 0H3535 | 8 | NUT FLANGE M5-0.8 NYLOCK (10KW) |
| 14 | 0G7714 | 1 | ASSY PCB TRI LED DISPLAY |
| 15 | 0G7621 | 3 | SCREW HH HI-LO M4 X 10MM |
| 16 | 10000003134 | 1 | GROMMET WIRE SLEEVE 90° |
| 17 | 0E7890 | 1 | BRACKET CIRCUIT BREAKER MOUNTING |
| 18 | 0E1330 | 1 | GROMMET |
| 19 | 0L6411A | 1 | WIRE #8 BLK E1-#10 RING 17"LNG (10KW) |
| | 0L6692B | 1 | WIRE #4 BLK E1- #10RNG 13.0"LNG (13, 16KW, 15KW ECOGEN) |
| | 0L6692A | 1 | WIRE #3 BLK E1- #10RNG 13.0"LNG (20-24KW) |
| 20 | 0L6411B | 1 | WIRE #8 RED E2 #10 RING 18"LNG (10KW) |
| | 0L6693B | 1 | WIRE #4 RED E2- #10RNG 15.0"LNG (13, 16KW, 15KW ECOGEN) |
| | 0L6693A | 1 | WIRE #3 RED E2- #10RNG 15.0"LNG (20-24KW) |
| 21 | 0D6029 | 3 | SCREW HHTT M6-1.0 X 16 ZYC |
| 22 | 0D3700 | 1 | NUT FLANGE M6-1.0 NYLOK |
| 23 | 023484S | 1 | BUSHING SNAP SB-1093-937 |
| 24 | G090388 | 8 | SCREW HHTT M6-1.0 X 12 ZINC |
| 25 | G051716 | 2 | NUT HEX M5-0.8 G8 CLEAR ZINC |
| 26 | 0K2098 | 1 | RELAY 12VDC 30A SPST PILOT DUTY (13, 16-24KW, 15KW ECOGEN) |
| 27 | 0C2267 | 2 | SCREW HHTT M5-0.8 X 12 ZP |
| 28 | 10000002903 | 2 | SCREW BHSC M3-0.5 X 10MM (13, 16-24KW, 15KW ECOGEN) |
| 29 | 0G7717 | 1 | SCREW REDUCED HH HI-LO M6-0.3 X 10MM |
| 30 | 0E7886D | 1 | CB 0045A 2P 240V S BQ2 LB (10KW) |
| | 0E7886F | 1 | CB 0060A 2P 240V S BQ2 LB (13KW) |
| | 0E7886G | 1 | CB 70A 2P 240V S BQ2 LB (16KW, 15KW ECOGEN) |
| | 0E7886M | 1 | CB 0090A 2P 240V S BQ2 LB (20KW) |
| | 0E7886H | 1 | CB 100A 2P 240V S BQ2 LB (22-24KW) |
| 31 | 10000017335 | 1 | HARN AC HSB EVO2 60HZ 426 (10KW) (NOT SHOWN) |
| | 10000048051 | 1 | HARN AC HSB EVO2 60HZ 816/999 W/ CT (13, 16-24KW) (NOT SHOWN) |
| | 10000028268 | 1 | HARN AC HSB EVO2 60HZ 999 ECOGEN W/ CT (15KW ECOGEN) (NOT SHOWN) |
| A | 0H7853 | 1 | TERM BLOCK 3P UL 12-20 AWG LBL |
| B | 0H7853A | 1 | TERM BLOCK 3P UL 12-20 AWG LBL |
| 32 | 10000003275 | 1 | ASSY CONTROLLER 2020 AC HSB |
| 33 | 10000016218 | 1 | SWITCH ROCKER SPST ON-OFF IP65 |
| 34 | 10000016218 | 1 | SWITCH ROCKER SPST ON-OFF IP65 (13, 16-24KW, 15KW ECOGEN) |
| 35 | A0002197676 | 1 | WIFI ASSY HSB |
| 36 | G029333 | 4 | TIE WRAP UL 7.4 X .19 NATL |
| 37 | A0000092127 | 1 | HARN STATOR LEADS AC HSB 60HZ 315 (NOT SHOWN) (20-24KW) |