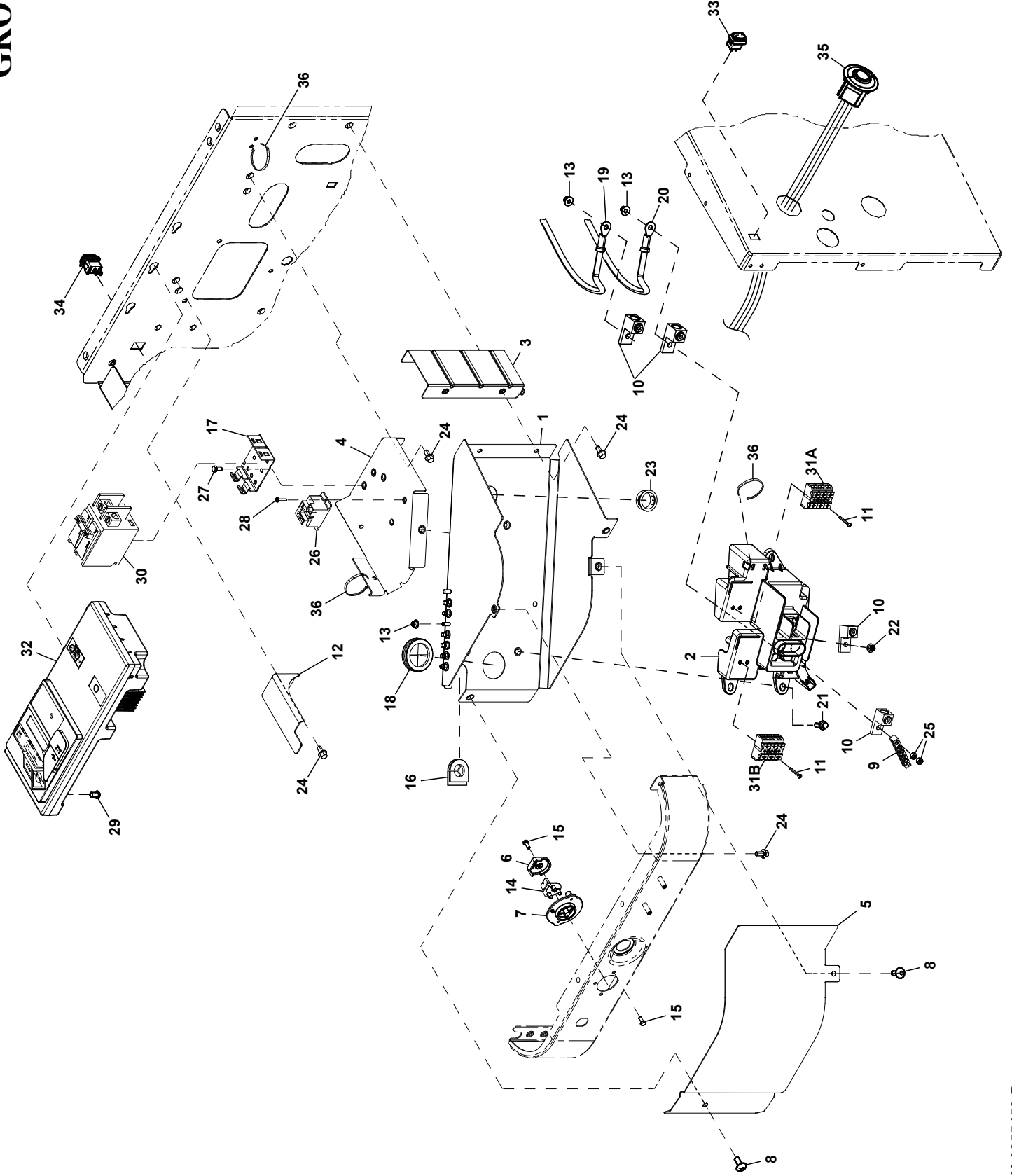


# GROUP EV



## EXPLODED VIEW: EV CONTROL PANEL 60HZ

DRAWING #: A0000973385

GROUP EV

ITEM	PART#	QTY.	DESCRIPTION
1	0L6647	1	CONN BOX W/WLD STUD AND PEMS
2	A0002033902	1	CUSTOMER CONNECTION PNL LGE LUG CUTOUT
3	0L4262	1	BACK SUPPORT (10KW)
4	0L4261	1	CIRCUIT BREAKER BRACKET (10KW)
	0L3009	1	CIRCUIT BREAKER BRACKET (14, 18-26KW, 15KW ECOGEN)
5	0L4260	1	ACCESS PANEL
6	0L4255	1	LED BACK COVER
7	0L4254	1	LED PLATE
8	10000042784	2	SCREW SWT M6-1.0 X 16 ZK W/NO WASHER
9	0K2888	1	GROUND BAR (4) 4-14 AWG ALUM
10	0K0481	4	LUG SLDLSS #2-#14 AL
11	10000001410	4	SCREW BHSC M3-0.5 X 25MM
12	0J8939	1	BACK CNTRLR SUPP BRKT
13	0H3535	9	NUT FLANGE M5-0.8 NYLOCK (14, 18-26KW, 15KW ECOGEN)
	0H3535	8	NUT FLANGE M5-0.8 NYLOCK (10KW)
14	0G7714	1	ASSY PCB TRI LED DISPLAY
15	0G7621	3	SCREW HH HI-LO M4 X 10MM
16	10000003134	1	GROMMET WIRE SLEEVE 90°
17	0E7890	1	BRACKET CIRCUIT BREAKER MOUNTING
18	0E1330	1	GROMMET
19	0L6411A	1	WIRE #8 BLK E1-#10 RING 17"LNG (10KW)
	0L6692B	1	WIRE #4 BLK E1- #10RNG 13.0"LNG (14, 18KW, 15KW ECOGEN)
	0L6692A	1	WIRE #3 BLK E1- #10RNG 13.0"LNG (20-24KW)
	A0001846383	1	WIRE #2 BLK E1 #10 RING 13.0 IN LNG (26KW)
20	0L6411B	1	WIRE #8 RED E2 #10 RING 18"LNG (10KW)
	0L6693B	1	WIRE #4 RED E2- #10RNG 15.0"LNG (14, 18KW, 15KW ECOGEN)
	0L6693A	1	WIRE #3 RED E2- #10RNG 15.0"LNG (20-24KW)
	A0001846384	1	WIRE #2 RED E2 #10 RING 15.0 IN LNG (26KW)
21	0D6029	3	SCREW HHTT M6-1.0 X 16 ZYC
22	0D3700	1	NUT FLANGE M6-1.0 NYLOK
23	023484S	1	BUSHING SNAP SB-1093-937
24	G090388	8	SCREW HHTT M6-1.0 X 12 ZINC
25	G051716	2	NUT HEX M5-0.8 G8 CLEAR ZINC
26	0K2098	1	RELAY 12VDC 30A SPST PILOT DUTY (14, 18-26KW, 15KW ECOGEN)
27	0C2267	2	SCREW HHTT M5-0.8 X 12 ZP
28	10000002903	2	SCREW BHSC M3-0.5 X 10MM (14, 18-26KW, 15KW ECOGEN)
29	0G7717	1	SCREW REDUCED HH HI-LO M6-0.3 X 10MM
30	0E7886D	1	CB 0045A 2P 240V S BQ2 LB (10KW)
	0E7886F	1	CB 0060A 2P 240V S BQ2 LB (14KW)
	0E7886G	1	CB 70A 2P 240V S BQ2 LB (15KW ECOGEN)
	0E7886L	1	CB 0080A 2P 240V S BQ2 LB (18KW)
	0E7886M	1	CB 0090A 2P 240V S BQ2 LB (20KW)
	0E7886H	1	CB 100A 2P 240V S BQ2 LB (22-24KW)
	A0001311299	1	CB 0110A 2P 240V S BQ2 LB (26KW)
31	A0001922516	1	HARN AC HSB EVO2 60HZ 816/999 W/ 150A CT (NOT SHOWN) (26KW)
	10000017335	1	HARN AC HSB EVO2 60HZ 426 (10KW) (NOT SHOWN)
	10000048051	1	HARN AC HSB EVO2 60HZ 816/999 W/ CT (NOT SHOWN) (14, 18-24KW)
	10000028268	1	HARN AC HSB EVO2 60HZ 999 ECOGEN W/ CT (15KW ECOGEN) (NOT SHOWN)
A	0H7853	1	TERM BLOCK 3P UL 12-20 AWG LBL
B	0H7853A	1	TERM BLOCK 3P UL 12-20 AWG LBL
32	10000003275	1	ASSY CONTROLLER 2020 AC HSB
33	10000016218	1	SWITCH ROCKER SPST ON-OFF IP65
34	10000016218	1	SWITCH ROCKER SPST ON-OFF IP65 (14, 18-26KW, 15KW ECOGEN)
35	A0002197676	1	WIFI ASSY HSB
36	G029333	4	TIE WRAP UL 7.4 X .19 NATL
37	A0000092127	1	HARN STATOR LEADS AC HSB 60HZ 315 (NOT SHOWN) (20-24KW)
	A0001985954	1	HARN STATOR LEADS AC HSB 60HZ 315 6AWG (NOT SHOWN) (26KW)