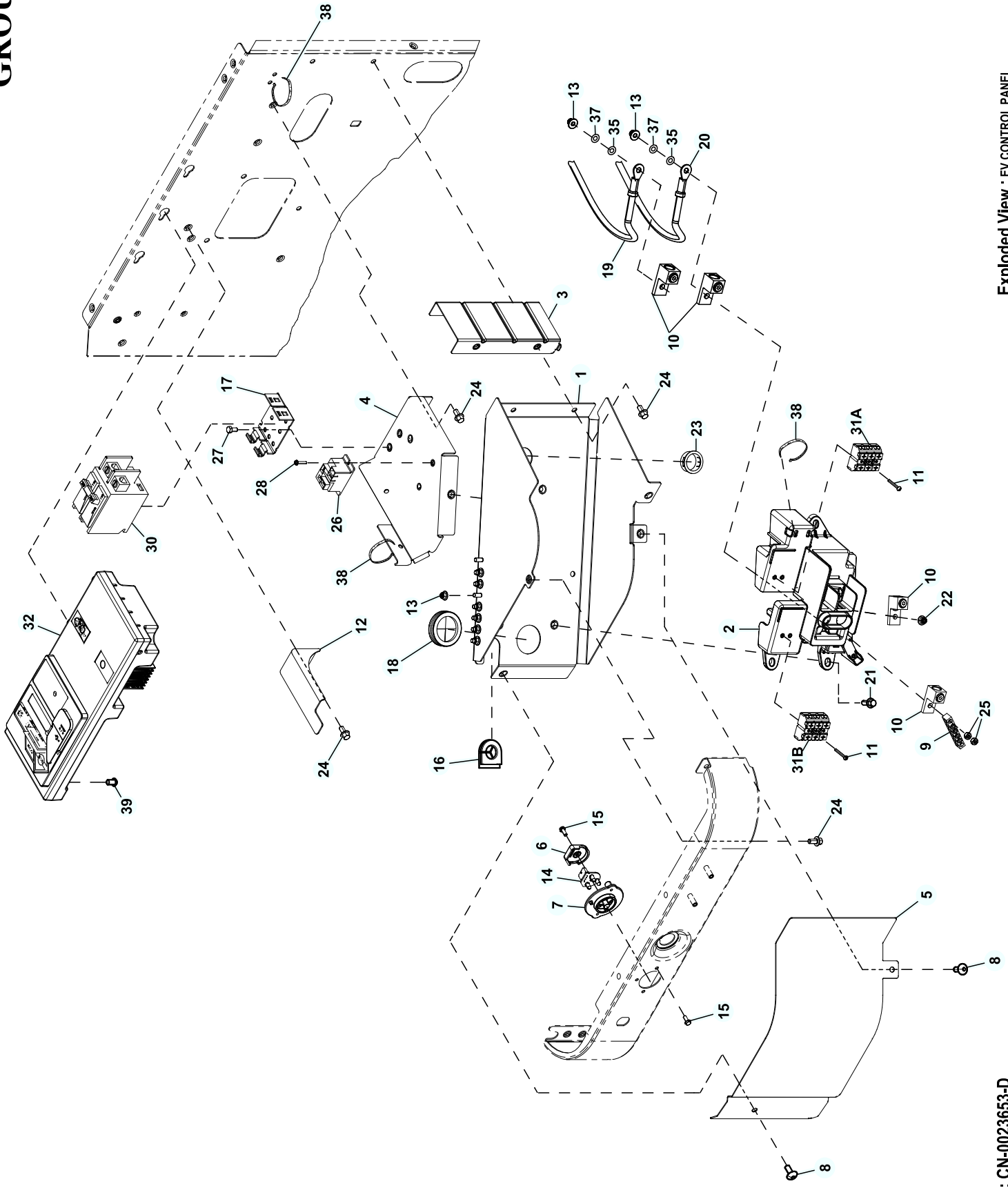


GROUP EV



EXPLODED VIEW: CONTROL PANEL GENERAC/Y13

DRAWING #: 0L6800

GROUP EV

ITEM	PART#	QTY.	DESCRIPTION
1	0L6647	1	CONN BOX W/WLD STUD AND PEMS
2	10000006009	1	CUSTOMER CONNECTION PANEL
3	0L4262	1	BACK SUPPORT (9-11KW)
4	0L4261	1	CIRCUIT BREAKER BRACKET (9-11KW)
	0L3009	1	CIRCUIT BREAKER BRACKET (16-22KW)
5	0L4260	1	ACCESS PANEL
6	0L4255	1	LED BACK COVER
7	0L4254	1	LED PLATE
8	10000042784	2	SCREW SWT M6-1.0 X 16 ZK W/NO WASHER
9	OK2888	1	GROUND BAR (4) 4-14 AWG ALUM
10	OK0481	4	LUG SLDLSS #2-#14 AL
11	10000001410	4	SCREW BHSC M3-0.5 X 25MM
12	0J8939	1	BACK CNTRLR SUPP BRKT
13	0H3535	9	NUT FLANGE M5-0.8 NYLOCK (11-22KW)
	0H3535	8	NUT FLANGE M5-0.8 NYLOCK (9KW)
14	0G7714	1	ASSY PCB TRI LED DISPLAY
15	0G7621	3	SCREW HH HI-LO M4 X 10MM
16	10000003134	1	GROMMET WIRE SLEEVE SLOT 90DEG
17	0E7890	1	BRACKET CIRCUIT BREAKER MOUNTING
18	0E1330	1	GROMMET
19	0L6411A	1	WIRE #8 BLK E1-#10 RING 17"LNG (9-11KW)
	0L6692B	1	WIRE #4BLK E1- #10RNG 13.0"LNG (16KW)
	0L6692A	1	WIRE #3BLK E1- #10RNG 13.0"LNG (20-22KW)
20	0L6411B	1	WIRE #8 RED E2 #10 RING 18"LNG (9-11KW)
	0L6693B	1	WIRE #4RED E2- #10RNG 15.0"LNG (16KW)
	0L6693A	1	WIRE #3RED E2- #10RNG 15.0"LNG (20-22KW)
21	0D6029	3	SCREW HHTT M6-1.0 X 16 ZYC
22	0D3700	1	NUT FLANGE M6-1.0 NYLOK
23	023484S	1	BUSHING SNAP SB-1093-937
24	G090388	8	SCREW HHTT M6-1.0 X 12 ZINC (16-22KW)
	G090388	10	SCREW HHTT M6-1.0 X 12 ZINC (9-11KW)
25	G051716	2	NUT HEX M5-0.8 G8 CLEAR ZINC
26	OK2098	1	RELAY 12VDC 30A SPST PILOT DUTY (11-22KW)
27	0C2267	2	SCREW HHTT M5-0.8 X 12 ZP
28	10000002903	2	SCREW BHSC M3-0.5 X 10MM (11-22KW)
29	---	--	-----
30	0E7886C	1	CB 40A 2P 240V S BQ2 LB (9KW)
	0E7886E	1	CB 50A 2P 240V S BQ2 LB (11KW)
	0E7886G	1	CB 70A 2P 240V S BQ2 LB (16KW)
	0E7886H	1	CB 100A 2P 240V S BQ2 LB (20-22KW)
31	10000003967	1	HARN AIR COOLED HSB (9KW) (NOT SHOWN)
	10000003976	1	HARN AIR COOLED HSB (11-22KW) (NOT SHOWN)
A	0H7853	1	TERM BLOCK 3P UL 12-20 AWG LBL
B	0H7853A	1	TERM BLOCK 3P UL 12-20 AWG LBL
32	0J8371C	1	CONTROLLER AC HSB
33	---	--	-----
34	---	--	-----
35	G051713	2	WASHER FLAT M5
36	---	--	-----
37	G049226	2	WASHER LOCK M5
38	G029333	4	TIE WRAP UL 7.4 X .19 NATL
39	0G7717	1	SCREW HH HI-LO M6-0.3X10MM