

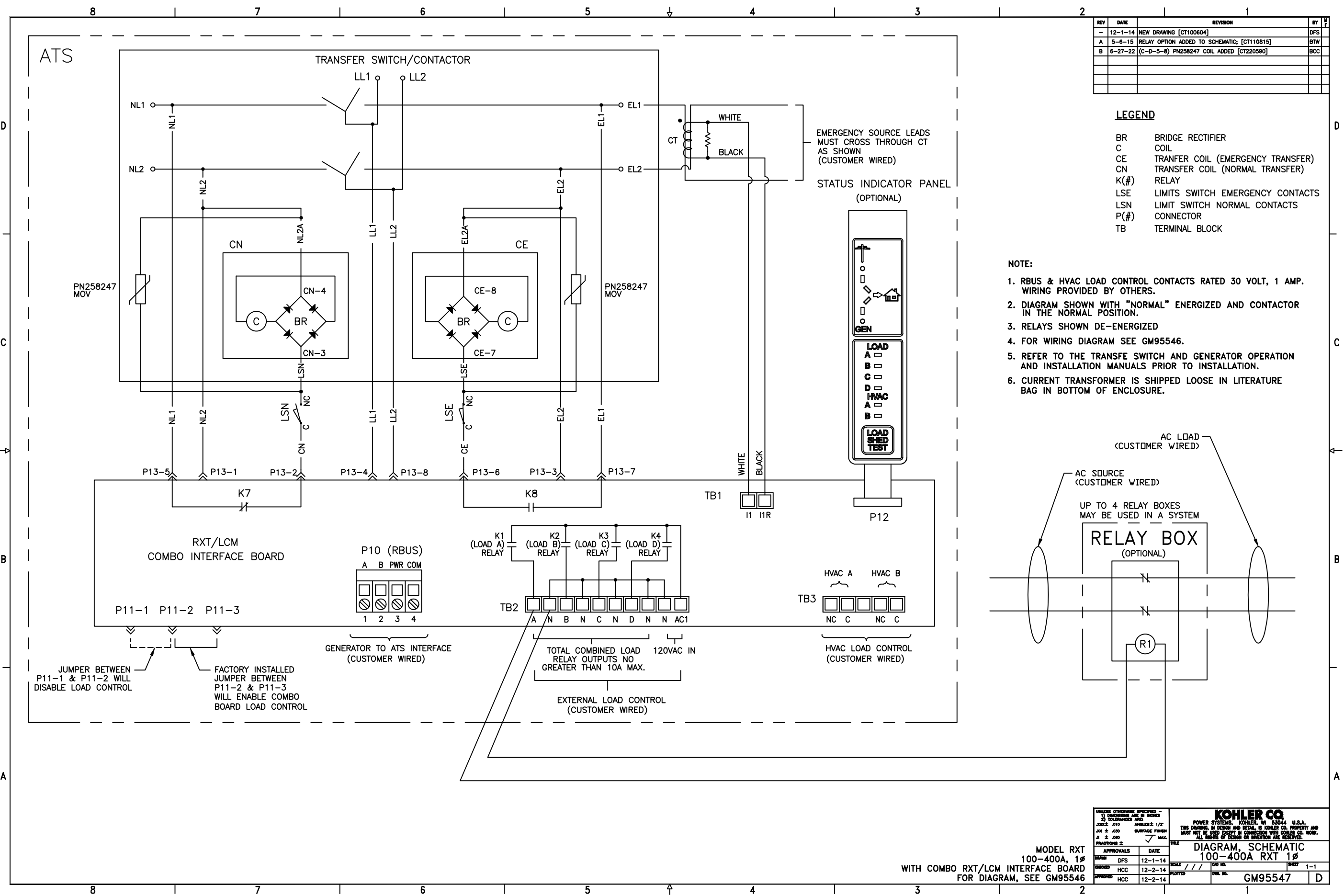
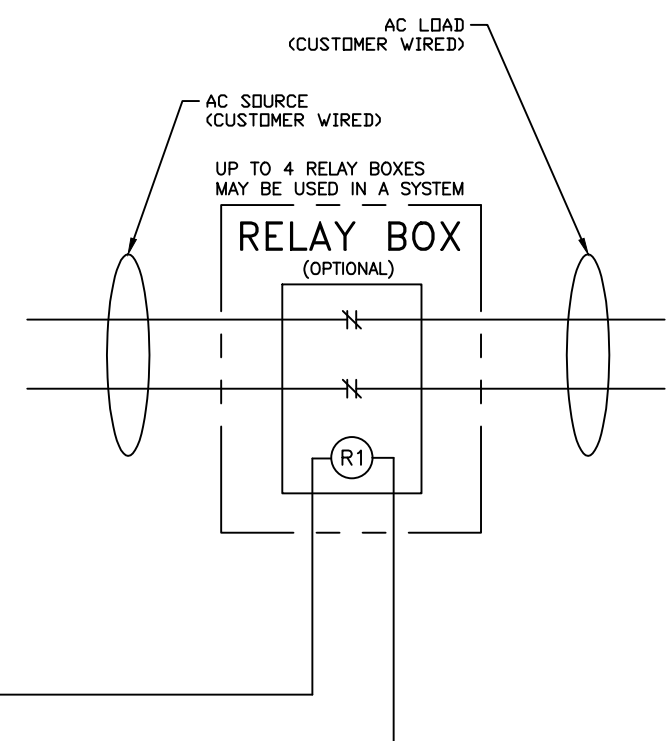
REV	DATE	REVISION	BY
-	12-1-14	NEW DRAWING [CT100604]	DFS
A	5-6-15	RELAY OPTION ADDED TO SCHEMATIC; [CT110815]	BTW
B	6-27-22	(C-D-5-8) PN258247 COIL ADDED [CT220590]	BCC

LEGEND

- BR BRIDGE RECTIFIER
- C COIL
- CE TRANSFER COIL (EMERGENCY TRANSFER)
- CN TRANSFER COIL (NORMAL TRANSFER)
- K(##) RELAY
- LSE LIMITS SWITCH EMERGENCY CONTACTS
- LSN LIMIT SWITCH NORMAL CONTACTS
- P(##) CONNECTOR
- TB TERMINAL BLOCK

NOTE:

1. RBUS & HVAC LOAD CONTROL CONTACTS RATED 30 VOLT, 1 AMP. WIRING PROVIDED BY OTHERS.
2. DIAGRAM SHOWN WITH "NORMAL" ENERGIZED AND CONTACTOR IN THE NORMAL POSITION.
3. RELAYS SHOWN DE-ENERGIZED
4. FOR WIRING DIAGRAM SEE GM95546.
5. REFER TO THE TRANSFER SWITCH AND GENERATOR OPERATION AND INSTALLATION MANUALS PRIOR TO INSTALLATION.
6. CURRENT TRANSFORMER IS SHIPPED LOOSE IN LITERATURE BAG IN BOTTOM OF ENCLOSURE.



APPROVALS	DATE	SCALE	SHEET
DESIGNED DFS	12-1-14	SCALE	1-1
CHECKED HCC	12-2-14	PLOTTED	
APPROVED HCC	12-2-14		

MODEL RXT
100-400A, 1Ø
WITH COMBO RXT/LCM INTERFACE BOARD
FOR DIAGRAM, SEE GM95546

KOHLER CO.
POWER SYSTEMS, KOHLER, WI 53044 U.S.A.
THIS DRAWING IS DESIGN AND RETAIL IS KOHLER CO. PROPERTY AND
MAY NOT BE USED EXCEPT IN CONNECTION WITH KOHLER CO. WORK.
ALL RIGHTS OF DESIGN OR INVENTION ARE RESERVED.

DIAGRAM, SCHEMATIC
100-400A RXT 1Ø

REV. NO. **GM95547** D