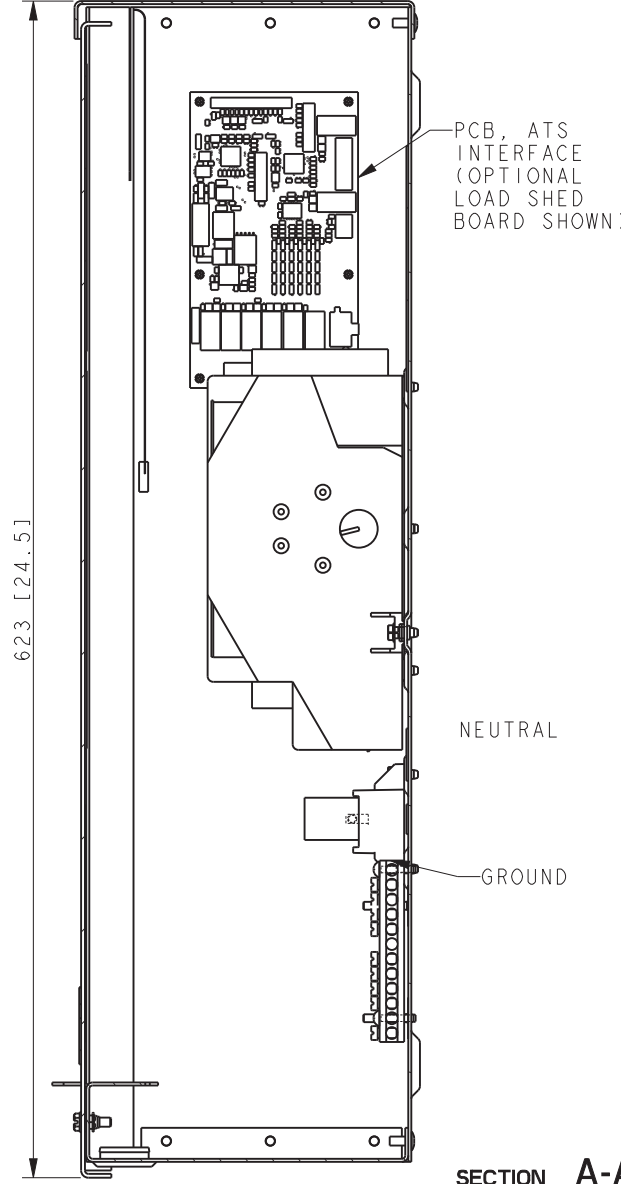
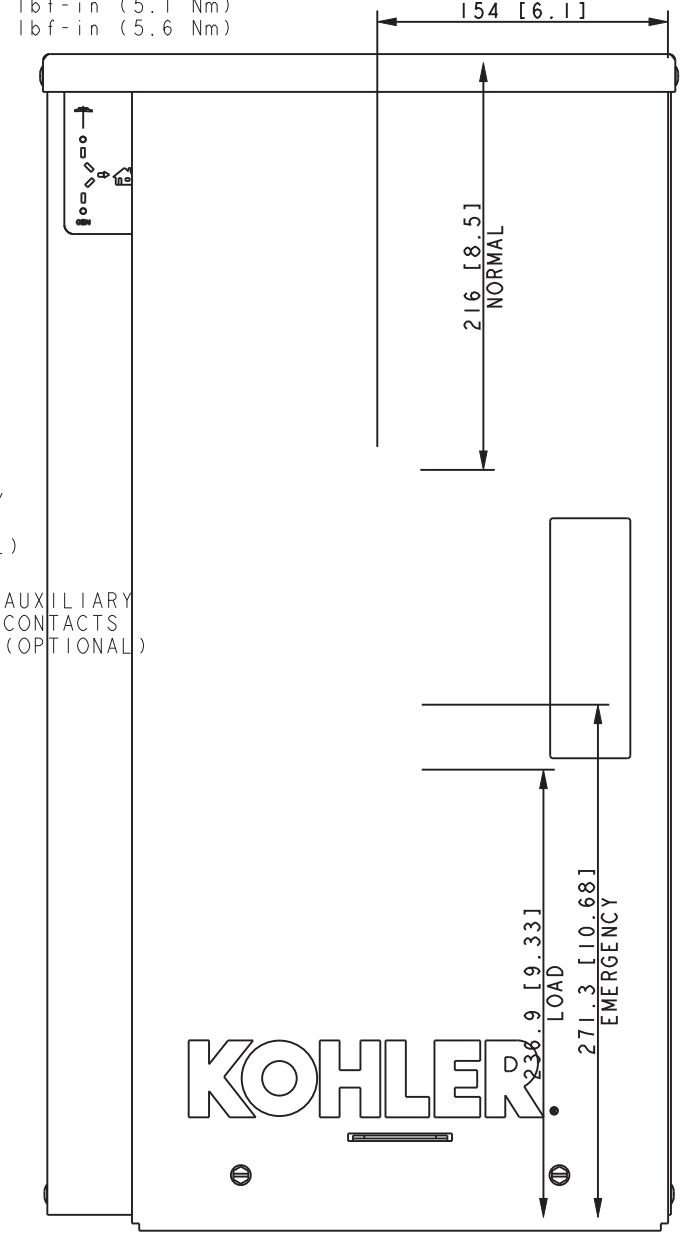
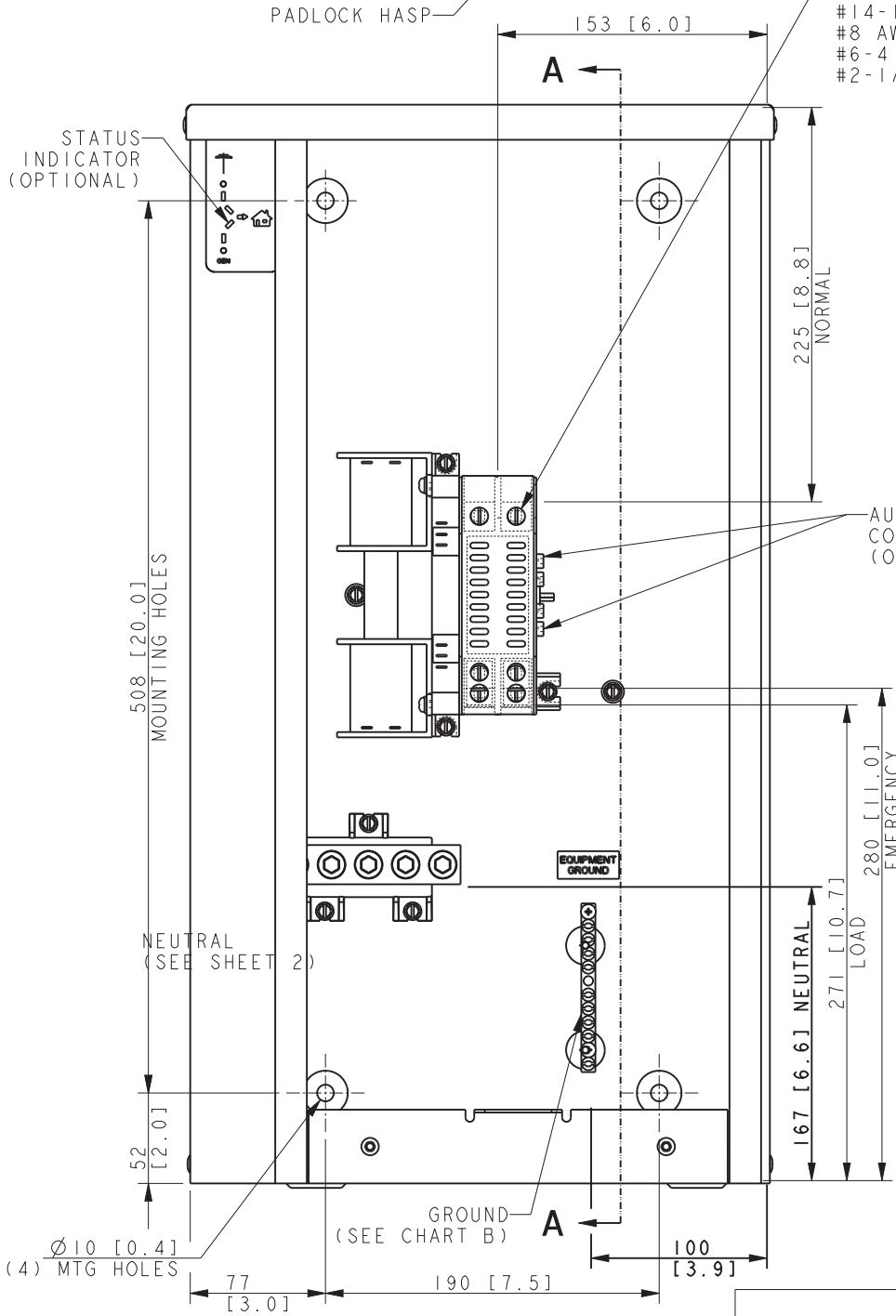
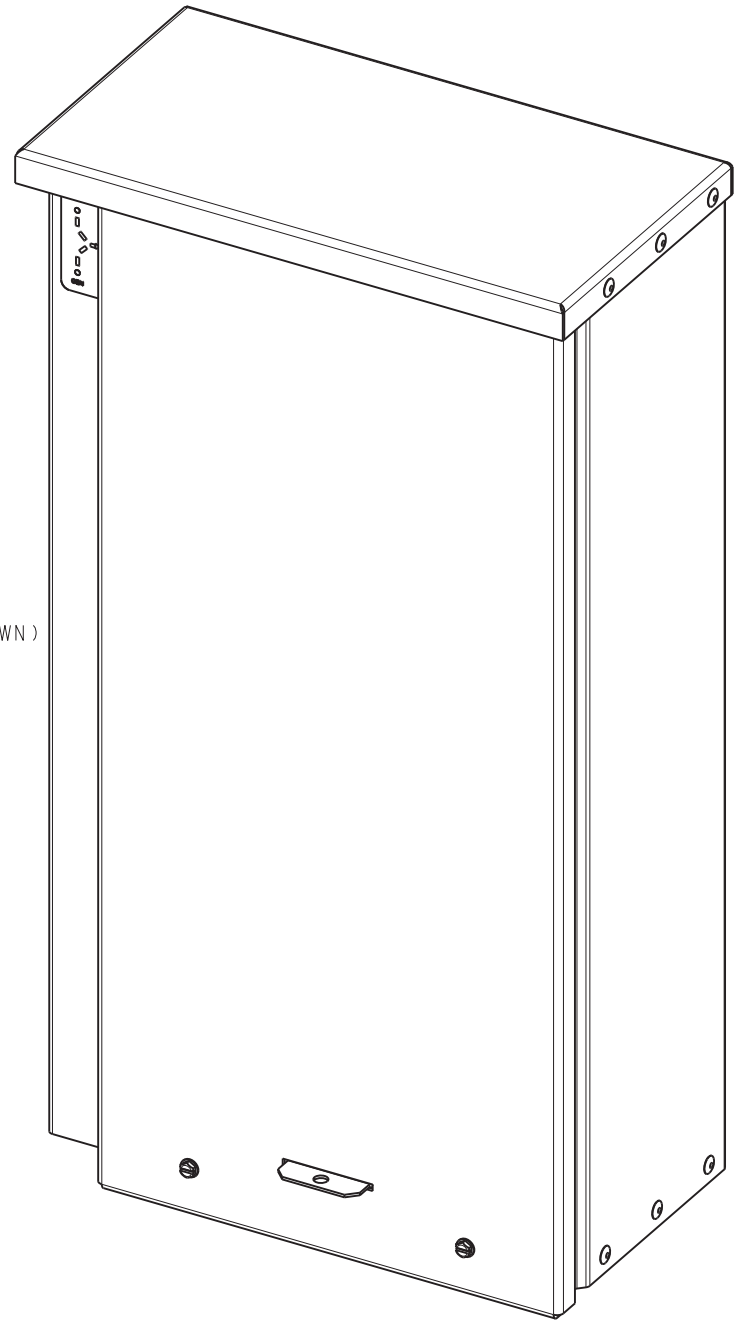


A: SCREW TYPE TERMINALS FOR EXTERNAL POWER CONNECTION			
SWITCH RATING (AMPS)	RANGE OF AL-CU WIRE SIZES		
	CONTACTOR (PER PHASE)	NEUTRAL	GROUND
100	(1) #14-1/0 AWG	(5) #12-250 KCMIL (Cu) OR (5) #10-250 KCMIL (Al)	(9) #14-#6 AWG (4) 1/0-#14 AWG
200	(1) #6-250 KCMIL	(5) #12-250 KCMIL (Cu) OR (5) #10-250 KCMIL (Al)	(9) #14-#6 AWG (4) 1/0-#14 AWG

SEE SHEET 2 FOR DIMENSIONS AND LOCATION OF 200A CONTACTOR.

TORQUE CONTACTOR TO:
 #14-10 AWG 35 lbf-in (4 Nm)
 #8 AWG 40 lbf-in (4.5 Nm)
 #6-4 AWG 45 lbf-in (5.1 Nm)
 #2-1/0 50 lbf-in (5.6 Nm)

TORQUE CONTACTOR TO:
 #14-10 AWG 50 lbf-in (5.6 Nm)
 #8 -1/0 120 lbf-in (14 Nm)



ALTERNATE 100A CONTACTOR VIEW

SECTION A-A

DIMENSION IN [] ARE INCHES.
 FINISH: ANSI 49 GRAY
 REFER TO OPERATOR'S MANUAL PRIOR TO INSTALLATION AND OPERATION OF UNIT.
 100 AMP APPROXIMATE WEIGHT 7 Kg (15 LBS.)
 200 AMP APPROXIMATE WEIGHT 7 Kg (15 LBS.)

B: GROUND TORQUE			
LARGE HOLE		SMALL HOLE	
#14-10 AWG	35 lbf-in (4 Nm)	#14-10 AWG	15 lbf-in (1.7 Nm)
#8 AWG	40 lbf-in (4.5 Nm)		
#6-4 AWG	45 lbf-in (5.1 Nm)		
#2-1/0	50 lbf-in (5.6 Nm)	#8-6 AWG	25 lbf-in (2.8 Nm)

MODEL RXT
 100-200A
 STANDARD TRANSITION
 TYPE 3R ENCLOSURE

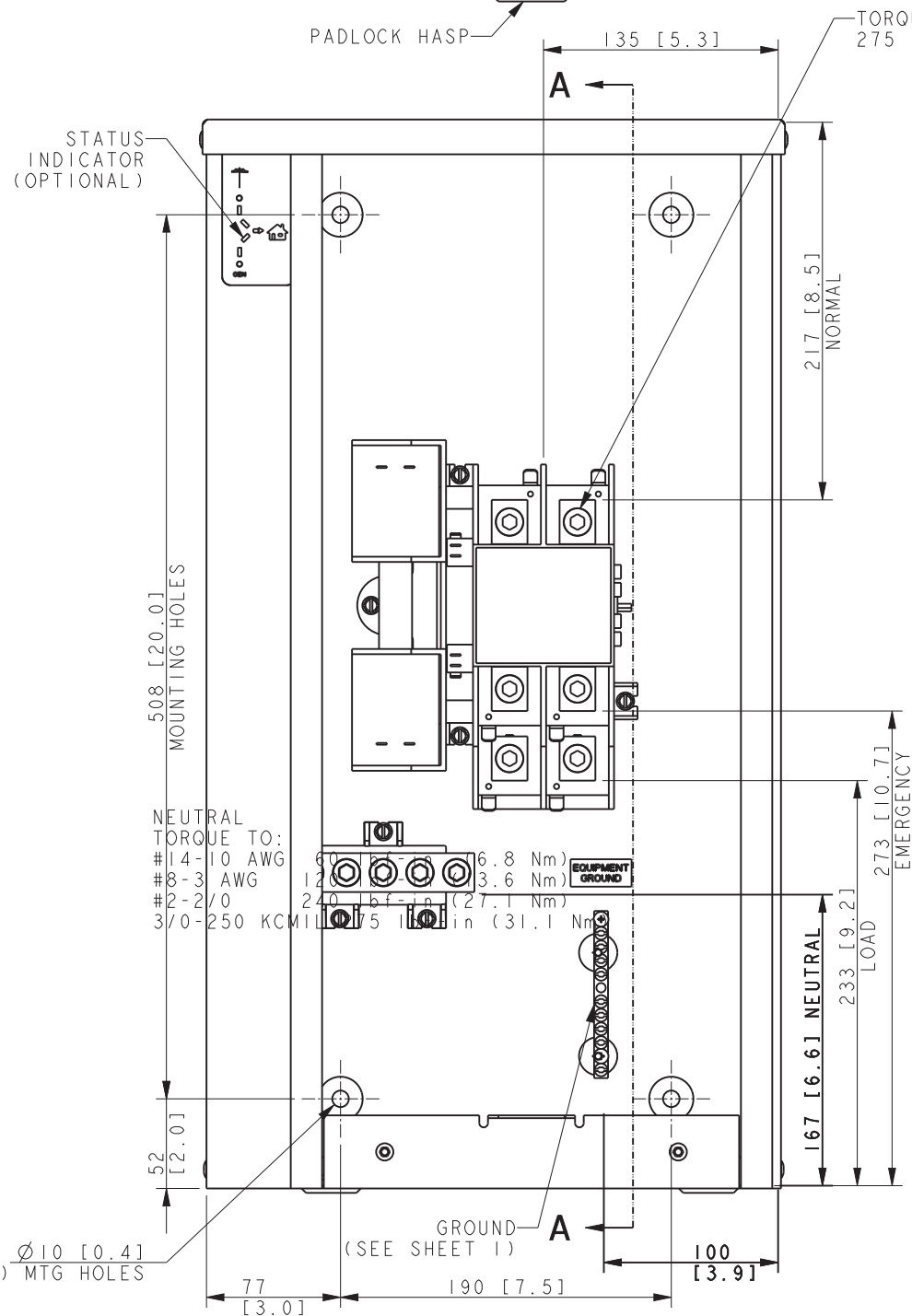
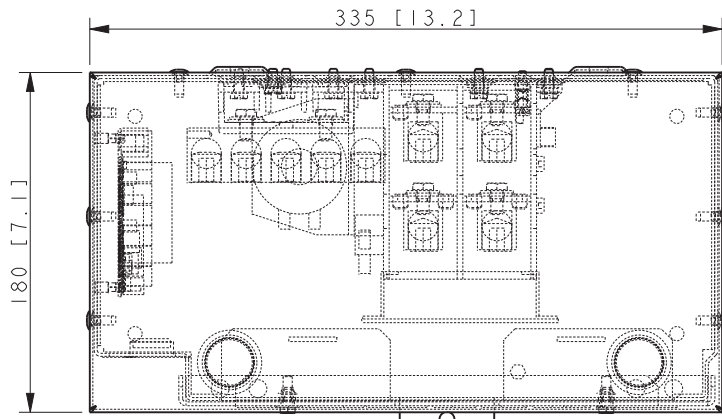
REV	DATE	ON COMPOSITE DWGS. SEE PART NO. FOR REVISION LEVEL	BY
-	4-3-14	NEW DRAWING [CT88602]	BTW
A	6-7-16	LOGO REMOVED; [CT148955]	
B	11-13-17	(D-4-3) WIRE RANGE AND QUANTITIES UPDATED; ALSO OPTIONAL 100A CONTACTOR VIEW ADDED; [CT179697]	BTW
C	4-10-18	(A-5) TABLE A: ADDED (B-8, D-4,6) TABLE & NOTES UPDATED, SEE SHEET 2 [CT186526]	RMJ

UNLESS OTHERWISE SPECIFIED -
 1) DIMENSIONS ARE IN MILLIMETERS
 2) TOLERANCES ARE:
 X.XX ± 0.25
 X.X ± 1.0
 X ± 1.5
 ANGLES ± 0° 30' MAX.

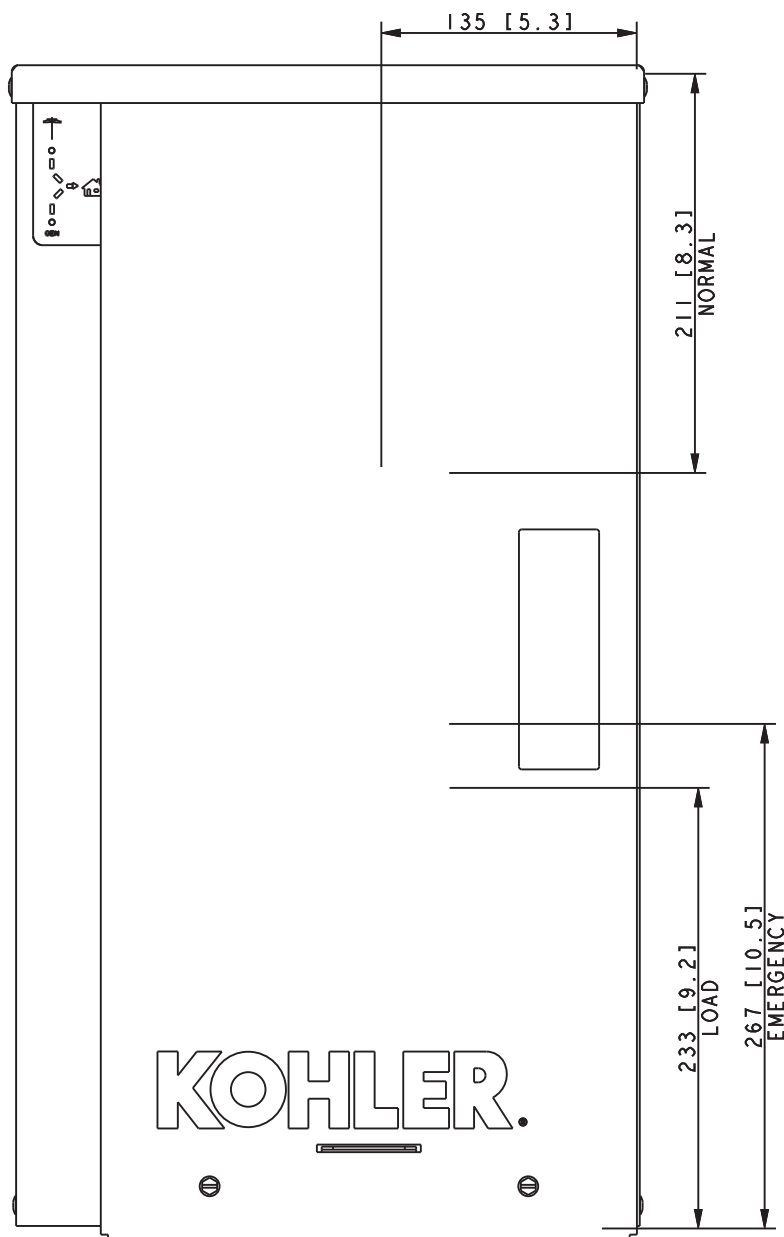
KOHLER CO. METRIC PRO-E
 POWER SYSTEMS, KOHLER, WI 53044 U.S.A.
 THIS DRAWING IN DESIGN AND DETAIL IS KOHLER CO. PROPERTY AND MUST NOT BE USED EXCEPT IN CONNECTION WITH KOHLER CO. WORK. ALL RIGHTS OF DESIGN OR INVENTION ARE RESERVED.

TITLE: **DIMENSION PRINT 100-200 SINGLE PHASE**

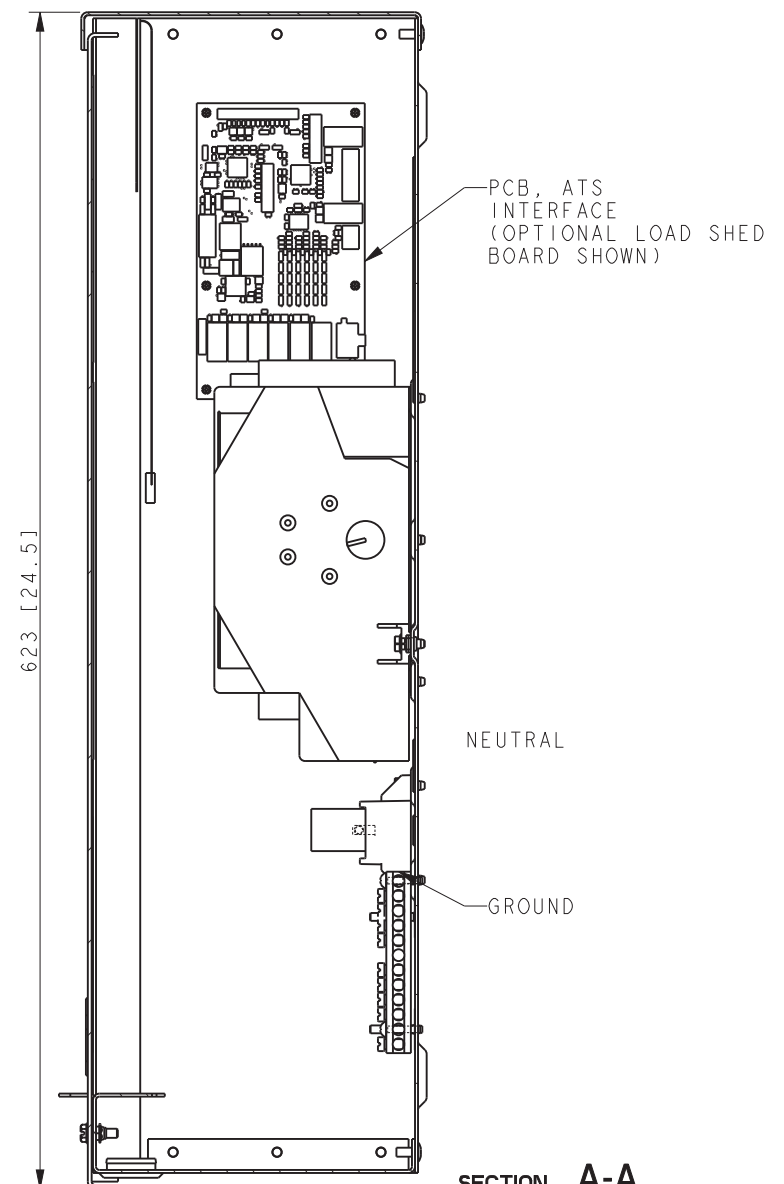
SCALE 0.50 CAD NO. SHEET 1 of 2
 DWG NO. **ADV-8688**



200A CONTACTOR
(COVER REMOVER TO SHOW DETAIL)



ALTERANTE 200A CONTACTOR VIEW



SECTION A-A

REV	DATE	ON COMPOSITE DWGS. SEE PART NO. FOR REVISION LEVEL	BY	UNLESS OTHERWISE SPECIFIED - 1) DIMENSIONS ARE IN MILLIMETERS 2) TOLERANCES ARE:
-	4-3-14	NEW DRAWING [CT88602]	BTW	X.XX ± 0.25
A	6-7-16	SEE SHEET 1 [CT148955]	BTW	X.X ± 1.0
B	11-13-14	OPTIONAL 200A CONTACTOR VIEW ADDED; [CT179697]	BTW	X ± 1.5
C	4-10-18	(A-8, A-6, D-3, D-5) UPDATED & ADDED NOTES, SEE SHEET 1 [CT186526]	RMJ	ANGLES ± 0° 30' MAX.
				THIRD ANGLE PROJECTION
				APPROVALS
				DATE
				DRAWN BTW 4-3-14
				CHECKED BTW 4-3-14
				APPROVED MTL 4-3-14

KOHLER CO. METRIC PRO-E
POWER SYSTEMS, KOHLER, WI 53044 U.S.A.
THIS DRAWING IN DESIGN AND DETAIL IS KOHLER CO. PROPERTY AND MUST NOT BE USED EXCEPT IN CONNECTION WITH KOHLER CO. WORK. ALL RIGHTS OF DESIGN OR INVENTION ARE RESERVED.

TITLE: **DIMENSION PRINT 100-200 SINGLE PHASE**

SCALE: 0.50 CAD NO. SHEET 2 of 2
DWG NO. **ADV-8688**