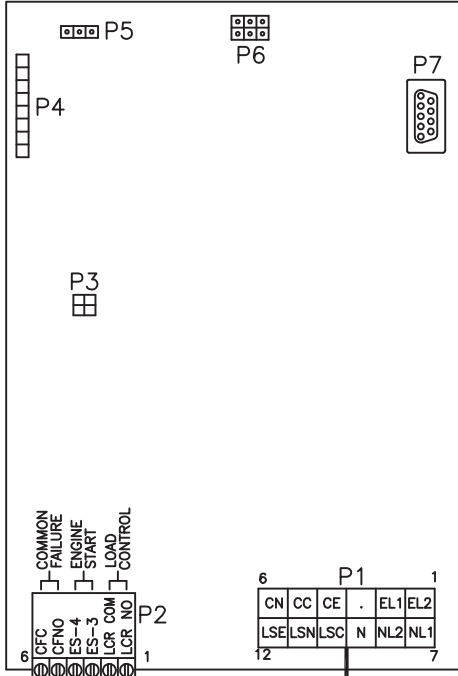


REV	DATE	REVISION	BY
-	8-7-08	NEW DRAWING [85807]	FCH
A	11-24-08	SEE SHEET 2 [86764]	FCH

EMERGENCY DISCONNECT  
400A, THERMAL MAGNETIC  
80% RATED, SIEMENS NJJ2B400K

CUSTOMER NORMAL  
SOURCE CONNECTIONS

MPAC 500 MAIN LOGIC BOARD



**P1 CONNECTIONS**

PIN #	CONNECTION
1	EL2 (TS-EMERGENCY)
2	EL1 (TS-EMERGENCY)
3	N/C
4	CE (TS-TB1-B2)
5	CC (NEUTRAL)
6	CN (TS-TB1-A2)
7	NL1 (TS-NORMAL)
8	NL2 (TS-NORMAL)
9	N (NEUTRAL)
10	LSC (TS-SN2-C)
11	LSN (TS-SE2-NO)
12	LSE (TS-SN2-NO)

Bonding Jumper  
(must be installed for  
service entrance applications)

CUSTOMER EMERGENCY  
SOURCE CONNECTIONS

NEUTRAL

EMERGENCY DISCONNECT  
400A, THERMAL MAGNETIC  
80% RATED, SIEMENS NJJ2B400K

CUSTOMER  
LOAD  
CONNECTIONS

**LEGEND**

- CN - TRANSFER COIL NORMAL
- CE - TRANSFER COIL EMERGENCY
- ED - EMERGENCY SERVICE DISCONNECT
- LSN - POSITION SENSE SWITCH NORMAL
- LSE - POSITION SENSE SWITCH EMERGENCY
- GND - ENCLOSURE GROUND
- ND - NORMAL SERVICE DISCONNECT
- P(#)- CONNECTOR
- TS - TRANSFER SWITCH/CONTACTOR

DETAIL A

APPROVALS		DATE	

UNLESS OTHERWISE SPECIFIED - 1) DIMENSIONS ARE IN INCHES 2) TOLERANCES ARE: FRACTIONS ±	ANGLES ± 1/2° SURFACE FINISH MAX.	<b>KOHLER CO.</b> POWER SYSTEMS, KOHLER, WI 53044 U.S.A. THIS DRAWING, IN DESIGN AND DETAIL, IS KOHLER CO. PROPERTY AND MUST NOT BE USED EXCEPT IN CONNECTION WITH KOHLER CO. WORK. ALL RIGHTS OF DESIGN OR INVENTION ARE RESERVED.	
TITLE <b>DIAGRAM, WIRING</b> <b>400A SE ATS</b>		SCALE PLOTTED	SHEET 1-2
DRAWN CHECKED APPROVED		DATE 8-7-08 8-15-08 8-15-08	Dwg. No. <b>GM65395</b>

400A SE ATS

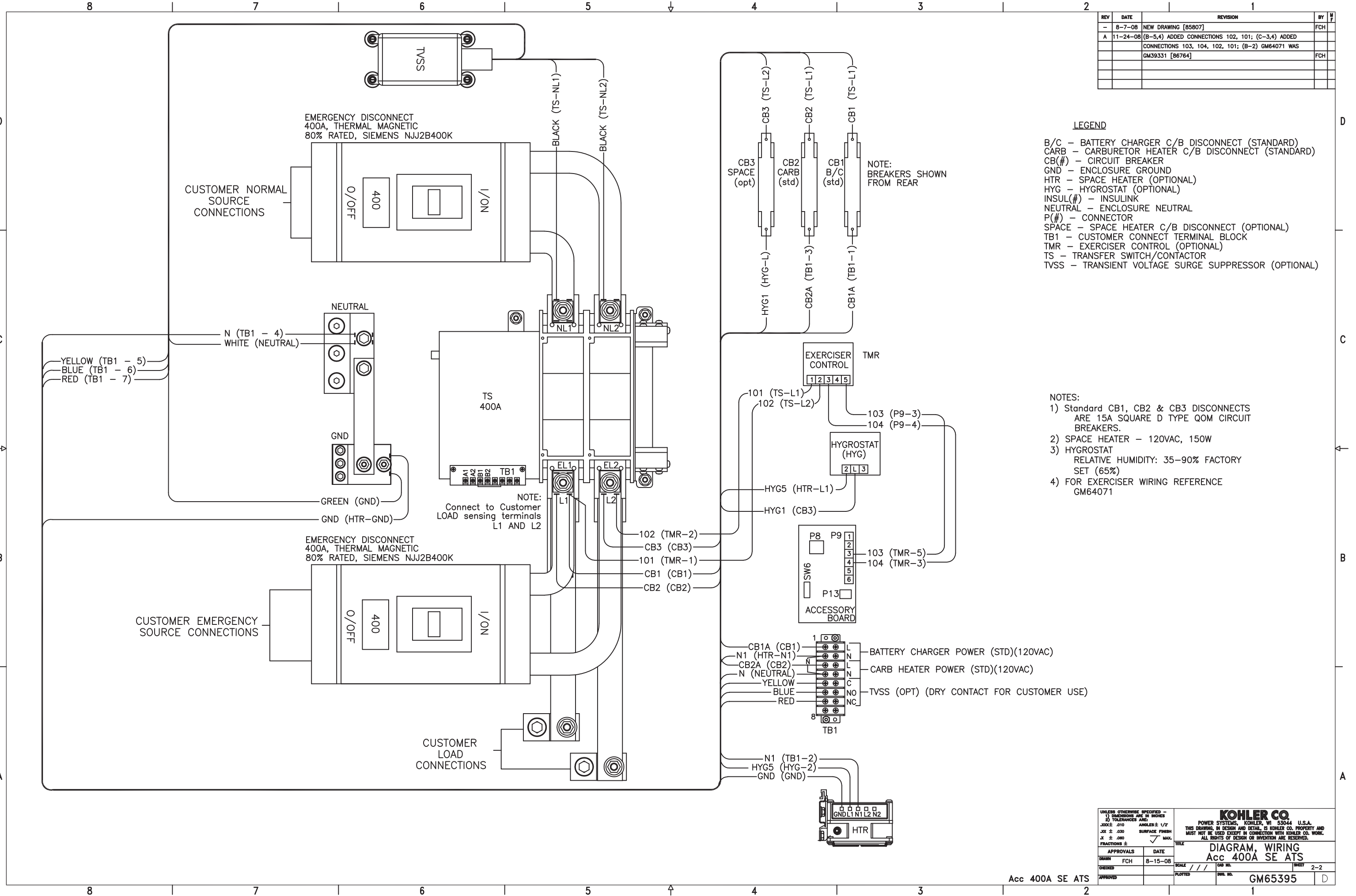
REV	DATE	REVISION	BY	APP
-	8-7-08	NEW DRAWING [85807]	FCH	
A	11-24-08	(B-5,4) ADDED CONNECTIONS 102, 101; (C-3,4) ADDED CONNECTIONS 103, 104, 102, 101; (B-2) GM64071 WAS GM39331 [86764]	FCH	

**LEGEND**

- B/C - BATTERY CHARGER C/B DISCONNECT (STANDARD)
- CARB - CARBURETOR HEATER C/B DISCONNECT (STANDARD)
- CB(#)- CIRCUIT BREAKER
- GND - ENCLOSURE GROUND
- HTR - SPACE HEATER (OPTIONAL)
- HYG - HYGROSTAT (OPTIONAL)
- INSUL(#)- INSULINK
- NEUTRAL - ENCLOSURE NEUTRAL
- P(#)- CONNECTOR
- SPACE - SPACE HEATER C/B DISCONNECT (OPTIONAL)
- TB1 - CUSTOMER CONNECT TERMINAL BLOCK
- TMR - EXERCISER CONTROL (OPTIONAL)
- TS - TRANSFER SWITCH/CONTACTOR
- TVSS - TRANSIENT VOLTAGE SURGE SUPPRESSOR (OPTIONAL)

**NOTES:**

- 1) Standard CB1, CB2 & CB3 DISCONNECTS ARE 15A SQUARE D TYPE QOM CIRCUIT BREAKERS.
- 2) SPACE HEATER - 120VAC, 150W
- 3) HYGROSTAT RELATIVE HUMIDITY: 35-90% FACTORY SET (65%)
- 4) FOR EXERCISER WIRING REFERENCE GM64071



APPROVALS		DATE	SCALE	CAD NO.	SHEET
DESIGN	FCH	8-15-08	SCALE		2-2
CHECKED			PLOTTED		
APPROVED					

UNLESS OTHERWISE SPECIFIED - 1) DIMENSIONS ARE IN INCHES 2) TOLERANCES ARE: X .000 ± .010 ANGLES ± 1/2° X ± .030 SURFACE FINISH X ± .080		TITLE	
POWER SYSTEMS, KOHLER, WI 53044 U.S.A. THIS DRAWING, IN DESIGN AND DETAIL, IS KOHLER CO. PROPERTY AND MUST NOT BE USED EXCEPT IN CONNECTION WITH KOHLER CO. WORK. ALL RIGHTS OF DESIGN OR INVENTION ARE RESERVED.		DIAGRAM, WIRING Acc 400A SE ATS	
DRAWN		DWG. NO.	
CHECKED		SHEET	
APPROVED		REV. NO.	
		GM65395	