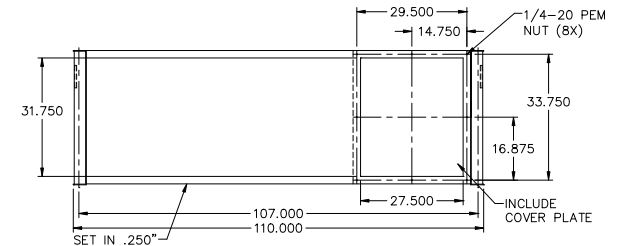
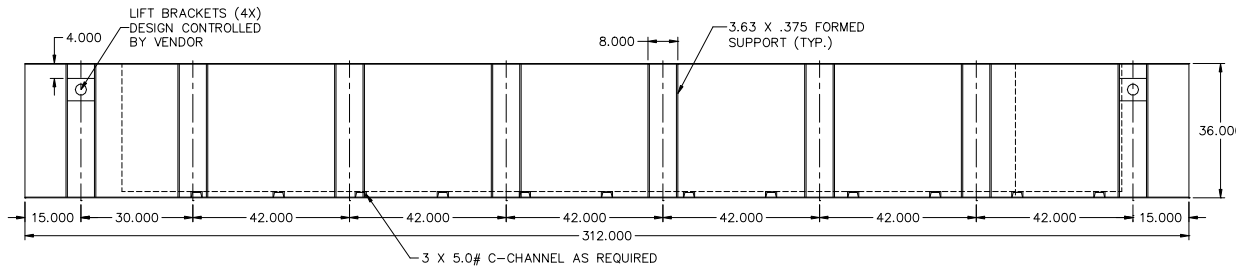
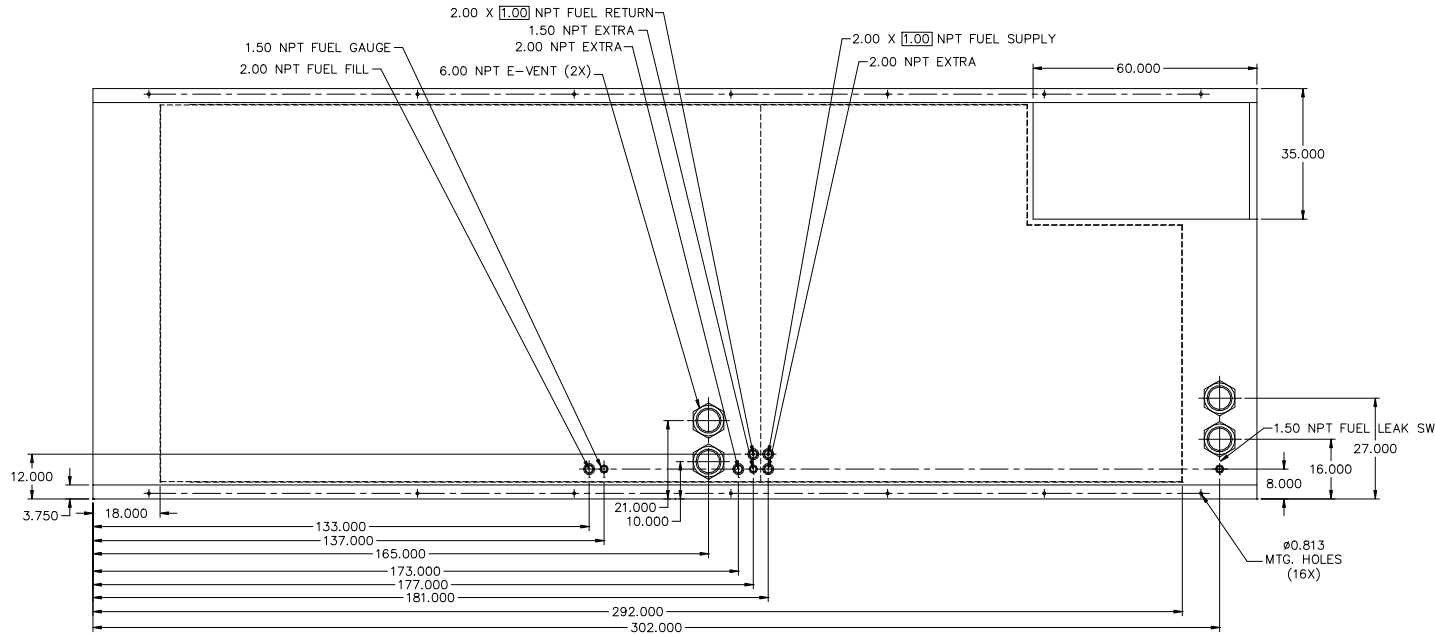


24HR TANK MD1600, MD2000 LV0/LV1/LV2



- NOTES:
1. MATERIAL: 7GA. RUPTURE BASIN
7GA. INNER TANK
 2. SECONDARY CONTAINMENT TANK
 3. FINISH PAINT GLOSS BLACK
 4. TANK TO INCLUDE
 - FUEL SUPPLY / RETURN DIP TUBES
 - LIFTING / TIE DOWN BRACKETS
 5. FUEL NPT SUPPLY/RETURN 2.00 X 1.00

APPROXIMATE WEIGHT: 8900 LBS

REVISIONS:

LEVEL:	DESCRIPTION:	DATE:	BY:
NA	NA	NA	NA

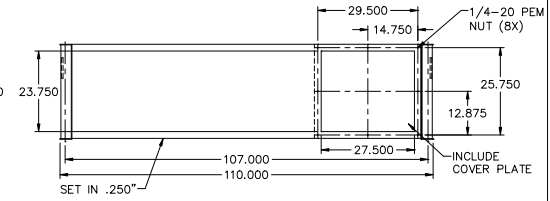
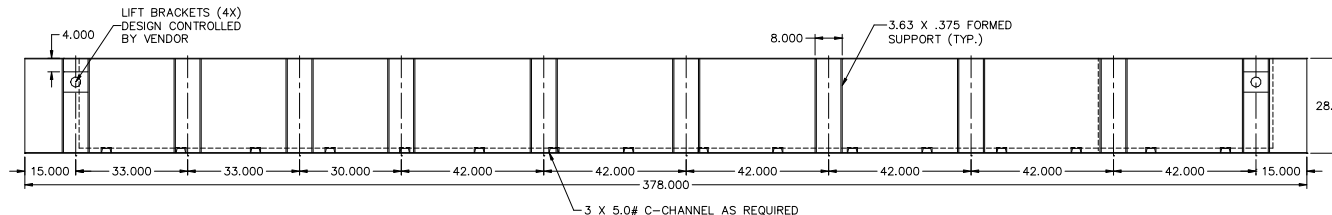
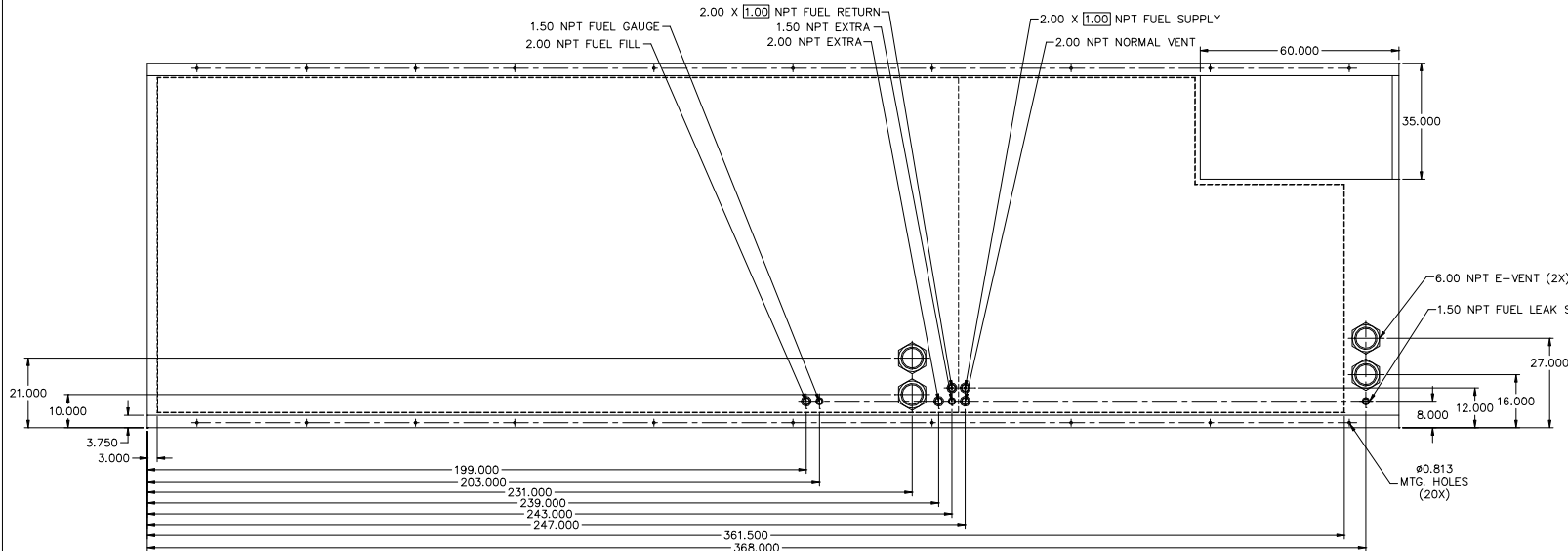
BLUE STAR
Power Systems Inc.

TANK SB 3850GL DW UL W/STUB-UP

P/N: NA 312"L X 110"W X 36"H

DATE: 08-03-17 BY: KAP DRAWN TO SCALE

24HR TANK MD1600, MD2000 LV3



- NOTES:
1. MATERIAL: 7GA. RUPTURE BASIN
7GA. INNER TANK
 2. SECONDARY CONTAINMENT TANK
 3. FINISH PAINT GLOSS BLACK
 4. TANK TO INCLUDE
 - FUEL SUPPLY / RETURN DIP TUBES
 - LIFTING / TIE DOWN BRACKETS
 5. FUEL NPT SUPPLY/RETURN 2.00 X 1.00

APPROXIMATE WEIGHT: 9700 LBS

REVISIONS:			
LEVEL:	DESCRIPTION:	DATE:	BY:
02	MOVED FITTINGS	08-03-17	KAP
01	MOVED VENTS, ADJUST INNER TANK	02-09-16	KAP



TANK SB 3850GL DW UL W/STUB-UP			
P/N: 18027	378"L X 110"W X 28"H		
DATE: 12-31-15	BY: KDH	DRAWN TO SCALE	