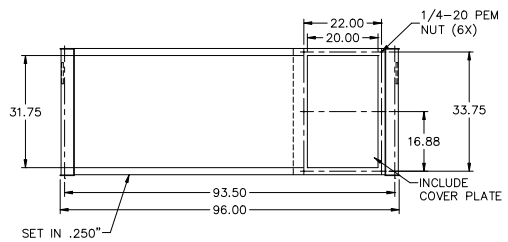
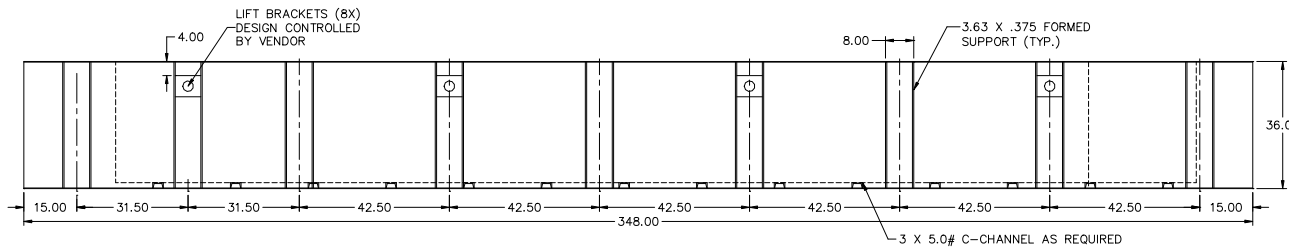
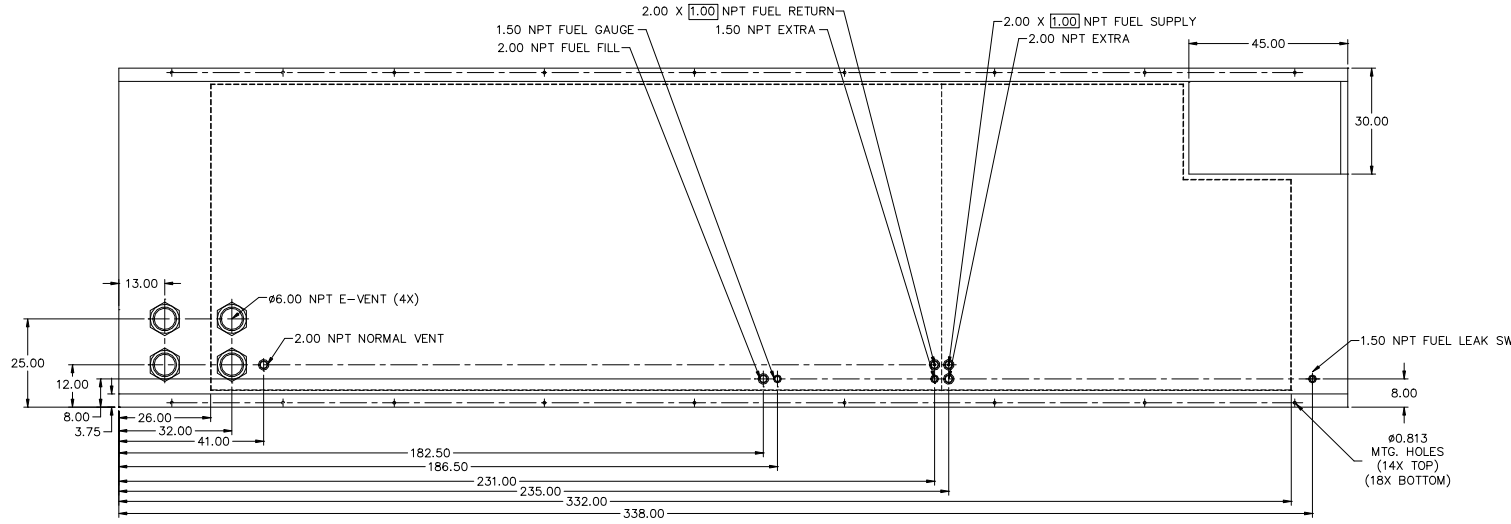


48HR TANK  
MD800, MD1000  
LV3



- NOTES:
1. MATERIAL: 7GA. RUPTURE BASIN  
7GA. INNER TANK
  2. SECONDARY CONTAINMENT TANK
  3. FINISH PAINT GLOSS BLACK
  4. TANK TO INCLUDE
    - FUEL SUPPLY / RETURN DIP TUBES
    - LIFTING / TIE DOWN BRACKETS
  5. FUEL NPT SUPPLY/RETURN 2.00 X 1.00

APPROXIMATE WEIGHT: 9000 LBS

| REVISIONS:                             |  |                |     |
|--|--|----------------|-----|
| LEVEL:                                 | DESCRIPTION:                                     | DATE:          | BY: |
| 01                                     | MOVE FITTINGS TO STANDARDIZE LOCATIONS, MATERIAL | 07-15-16       | KAP |
| <b>BLUE STAR</b><br>Power Systems Inc. |  |                |     |
| TANK SB 3600GL DW UL W/STUB-UP         |  |                |     |
| P/N: 19727                             | 348"L X 96"W X 36"H                              |                |     |
| DATE: 07-15-16                         | BY: KDH  | DRAWN TO SCALE |     |