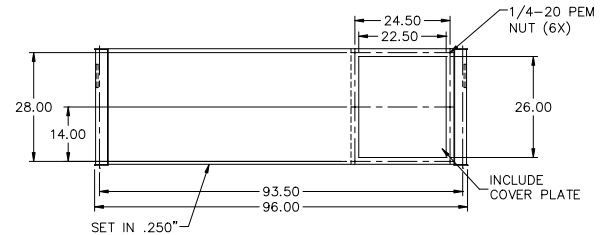
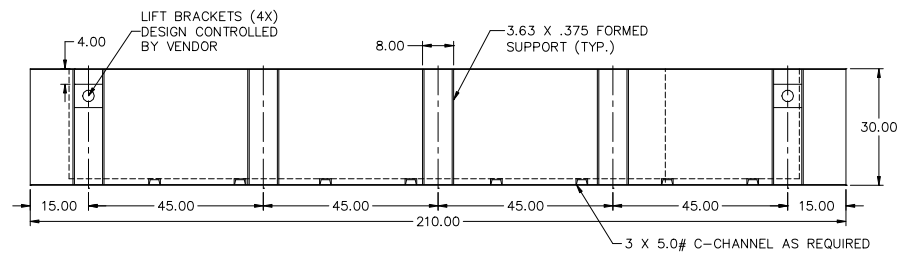
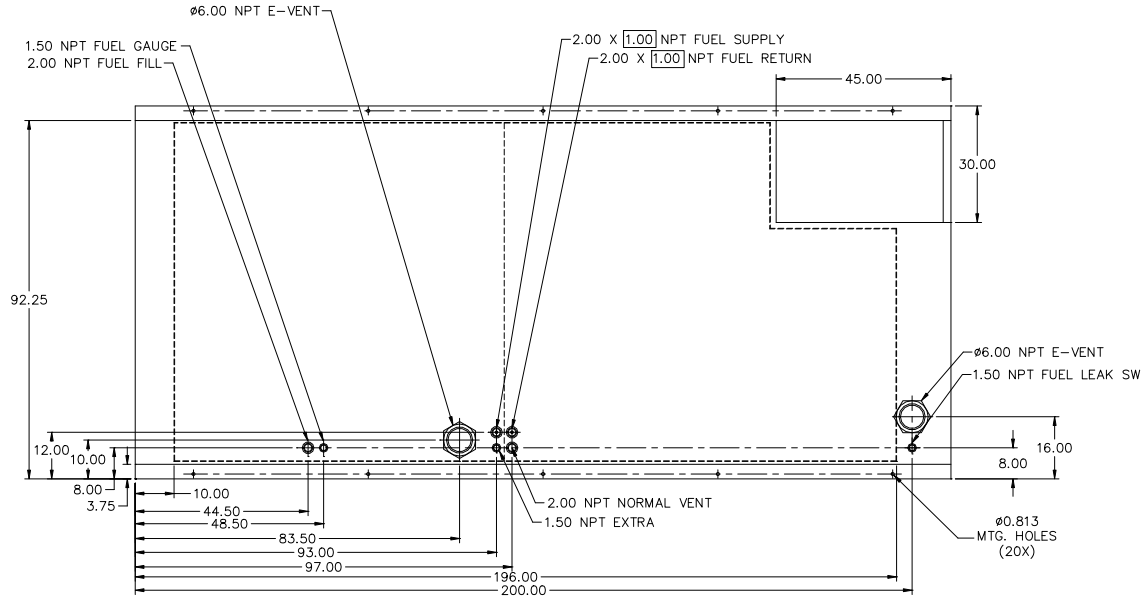


**24HR TANK  
MD800, MD1000  
LV0/LV1/LV2**



- NOTES:
1. MATERIAL: 7GA. RUPTURE BASIN  
7GA. INNER TANK
  2. SECONDARY CONTAINMENT TANK
  3. FINISH PAINT GLOSS BLACK
  4. TANK TO INCLUDE
    - FUEL SUPPLY / RETURN DIP TUBES
    - LIFTING / TIE DOWN BRACKETS
  5. FUEL NPT SUPPLY/RETURN 2.00 X 1.00

APPROXIMATE WEIGHT: 5100 LBS

REVISIONS:			
LEVEL:	DESCRIPTION:	DATE:	BY:
01	MOVE FITTINGS TO STANDARDIZE LOCATIONS, MATERIAL	07-15-16	KAP

**BLUE STAR**  
Power Systems Inc.

TANK SB 1800GL DW UL W/STUB-UP	
P/N: 19663	210"L X 96"W X 30"H
DATE: 05-18-16	BY: KAP DRAWN TO SCALE