






NOTE: DIMENSIONS IN [ ] ARE ENGLISH STANDARD EQUIVALENTS.

REV	DATE	CHANGE NUMBER	ON COMPOSITE DWGS, SEE PART NO. FOR REVISION LEVEL □ INDICATES PART NUMBERS AFFECTED BY LATEST DRAWING REVISION	BY
-	22 JAN 2021	CT209473	NEW DRAWING	RVM

UNLESS OTHERWISE SPECIFIED: ALL DIMENSIONS IN MILLIMETERS GENERAL TOLERANCES: X.XX ± 0.25 X.X ± 1.0 X ± 1.5 ANGLES ± 0°30'		SURFACE FINISH ✓ MAX.
THIRD ANGLE PROJECTION 		
MAJOR  = 		CHARACTERISTICS COMPLY WITH KPS-80022
CRITICAL  = 		
DRAWN BY RVM		DATE:
APPROVED TAS		22 JAN 20

DO NOT SCALE.  
THIS ASSEMBLY OR PART MUST  
COMPLY WITH PEP-RML-001.  
REFERENCE CAD MODEL FOR  
UNSPECIFIED DIMENSIONS.

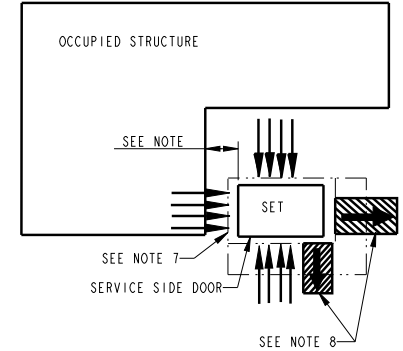
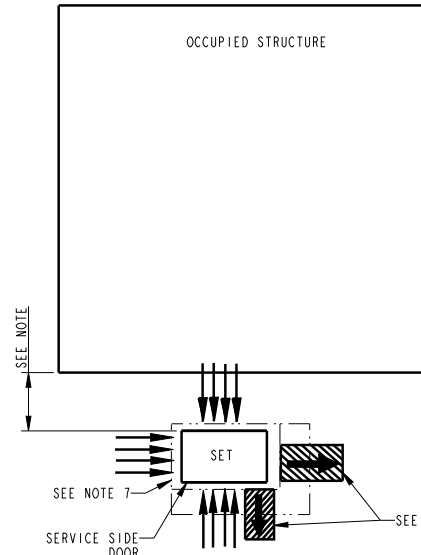
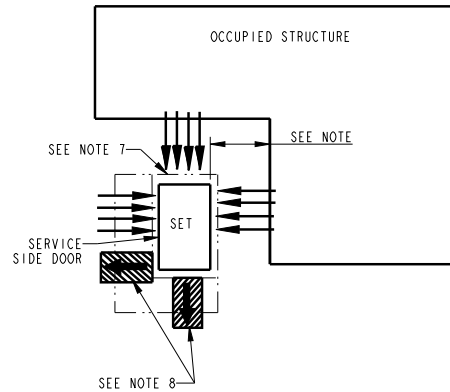
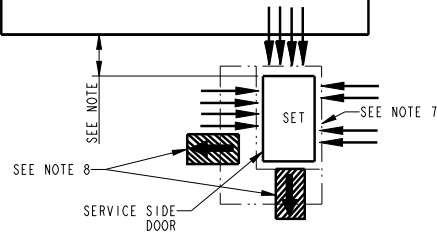
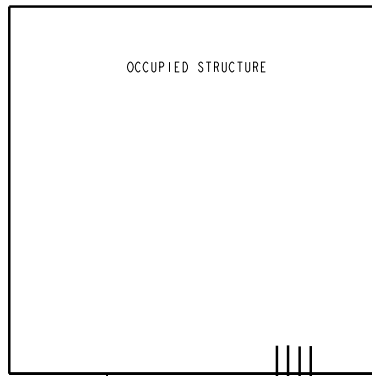
**KOHLER**  
KOHLER, WISCONSIN 53044

SCALE: 0.060 SHEET SIZE: B SHEET 1 OF 2

TITLE:  
**DIMENSION PRINT, 24RCLA**

DWG NO.: **ADV-9758**

THIS DRAWING IN DESIGN AND DETAIL IS KOHLER CO. PROPERTY AND MUST NOT BE USED EXCEPT IN CONNECTION WITH KOHLER CO. WORK. ALL RIGHTS OF DESIGN OR INVENTION ARE RESERVED.



# INSTALLATION GUIDELINES

- 1) EXHAUST IS AIMED AWAY FROM OR PARALLEL TO THE STRUCTURE.
- 2) EXHAUST IS NOT DIRECTED AT PLAY AREAS, PATIOS OR OTHER AREAS WHERE PEOPLE CONGREGATE.
- 3) THE NEAREST WINDOW, VENT, DOOR OR SIMILAR STRUCTURE OPENING IS AT LEAST 5 FEET FROM THE EXHAUST END OF THE GENERATOR.
- 4) GENERATOR SET MUST BE INSTALLED A MINIMUM OF 18 INCHES FROM STRUCTURE PER NFPA 37, HOWEVER, ACTUAL DISTANCE MAY DIFFER BASED ON STATE AND LOCAL CODES.
- 5) WINDOWS & DOORS ON ADJACENT WALLS ARE CLOSED.
- 6) FURNACE AND OTHER SIMILAR INTAKES ARE AT LEAST 10 FEET FROM EXHAUST END OF GENERATOR.
- 7) 4" THICK CONCRETE PAD EXTENDING 6" BEYOND GENSET ON ALL SIDES.
- 8) NO PLANTS, SHRUBS OR OTHER COMBUSTIBLES ALLOWED IN CLEARANCE AREA. (MINIMUM 8 FT. FROM EXHAUST END).
- 9) SENSITIVE PLANTS, PATIO FURNITURE, ETC. ARE AT LEAST 8 FEET FROM EXHAUST END OF SET.
- 10) REFER TO OWNERS MANUAL FOR OTHER INSTALLATION CONSTRAINTS.

24RCLA

REV	DATE	CHANGE NUMBER	ON COMPOSITE DWGS, SEE PART NO. FOR REVISION LEVEL □ INDICATES PART NUMBERS AFFECTED BY LATEST DRAWING REVISION	BY
-	22 JAN 2021	CT209473	NEW DRAWING	RVM

UNLESS OTHERWISE SPECIFIED: ALL DIMENSIONS IN MILLIMETERS GENERAL TOLERANCES: X.XX ± 0.25 X.X ± 1.0 SURFACE FINISH X ± 1.5 ANGLES ± 0°30' MAX.	
THIRD ANGLE PROJECTION	
MAJOR	CRITICAL
CHARACTERISTICS COMPLY WITH KPS-80022	
DRAWN BY RVM	DATE:
APPROVED BY TAS	22 JAN 2021

DO NOT SCALE.  
THIS ASSEMBLY OR PART MUST  
COMPLY WITH PEP-RML-001.  
REFERENCE CAD MODEL FOR  
UNSPECIFIED DIMENSIONS.

**KOHLER**  
KOHLER, WISCONSIN 53044

SCALE: 0.150 SHEET SIZE: B SHEET 2 OF 2

TITLE:  
**DIMENSION PRINT, 24RCLA**

DWG NO.: **ADV-9758**

THIS DRAWING IN DESIGN AND DETAIL IS KOHLER CO. PROPERTY AND MUST NOT BE USED EXCEPT IN CONNECTION WITH KOHLER CO. WORK. ALL RIGHTS OF DESIGN OR INVENTION ARE RESERVED.