

GENERATORS

For Home and Small Business



KOHLER[®]
IN POWER. SINCE 1920.

TABLE OF CONTENTS



What's a Standby Generator?	5
Generators 101: How It Works	6
Standby Generator vs. Portable Generator	8
Why KOHLER® Generators?	10
The Power Inside – What You Need to Know	12
Estimate Your Power Needs.	14
Find Your Perfect Generator	16
10 kW/12 kW.....	17
12 kW	18
14 kW/20 kW	19-20
24 kW/30 kW	21
38 kW/48 kW	22
60 kW	23
80 kW/100 kW	24
125 kW/150 kW.....	25
KOHLER Generators Trusted Worldwide for Nearly a Century.....	26



WHAT'S A STANDBY GENERATOR?

A KOHLER® standby generator is installed outside your home or business like an AC unit. It's wired into the electrical panel and comes on automatically during a power outage. KOHLER generators run on propane or natural gas, so there's no refueling needed.

In just 10 seconds, a KOHLER generator automatically powers your AC, heat, sump pump and major appliances like your fridge and oven.* If you own a business, we're talking HVAC, lights, security system, cash register and computer.* Everything, all at the same time. And you don't have to do a thing.

*Based on generator and load size.

Generators 101: HOW IT WORKS





1. Before the power goes out

Your automatic transfer switch (ATS) monitors the electricity coming from the utility. It's working 24/7 to protect your home.



2. The power goes out

When the power fails or drops below an acceptable level (brownout), the ATS signals the generator to start. In seconds, the ATS transfers your power from the utility to the generator.

3. Your generator powers your home

The generator supplies your home or business with electricity until the utility power is restored.



4. The utility power returns

When the utility power is restored, the ATS automatically transfers your power source from the generator to the utility.

5. Your generator turns off

Your KOHLER® generator automatically shuts down, ready for the next power outage.

STANDBY GENERATOR VS. PORTABLE GENERATOR

When it comes to backup power, you have two choices.

Standby Generators

- Ideal for backing up your home or business
- Powers critical hardwired systems like AC, heat, sump pump, well pump, security system and large appliances
- Automatically starts and restores power in seconds, whether you're there or not
- No refueling—runs on your building's natural or LP gas
- Delivers high-quality power—won't harm your electronics



Portable Generators

- Designed for job sites, camping, tailgating and limited backup power
- Powers plug-in items through extension cords or hardwired items through optional manual transfer switch
- Runs on gasoline, natural gas or liquid propane gas
- Operates outdoors using careful safety guidelines





**WHY KOHLER® GENERATORS?
Glad You Asked**

Total Reliability

During our design process, every KOHLER® generator endures hundreds of performance tests to ensure total reliability. That's why homes, businesses, governments, even the National Weather Service trust dependable, long-lasting KOHLER generators.

Powers Everything

In just 10 seconds, KOHLER generators can automatically power your HVAC, sump pump and major appliances—all at the same time.*

High-Quality Power

Our high-quality power output protects your sensitive electronics from erratic power surges.

Outlasts the Outage

Every KOHLER generator features a heavy-duty engine built to exceed the demands of standby power.

Long warranty

You get our five-year, 2,000-hour limited warranty, plus a corrosion-proof enclosure that's built to last.†

*Based on generator and load size.

†14RESA(L) and 20RESC(L) models feature corrosion-proof enclosure; all other models feature corrosion-resistant enclosures.

THE POWER INSIDE— WHAT YOU NEED TO KNOW

The Engine in Your Kohler Generator

The engine is the heart of generator performance and reliability—and a key indicator of generator quality.

Inside every KOHLER generator is a heavy-duty engine built to withstand extreme workloads over many years. These engines are tested and proven in punishing environments, such as industrial construction, that far exceed the demands of standby power. They produce significant power while staying true to voltage and frequency ratings.



Why Motor Starting Is Important

Generator wattage isn't the only criteria for buying a home generator – peak motor starting is important too. That's because large appliances like your AC and fridge need sharp increases in power to start up.

KOHLER generators handle those peak load demands with high motor-starting ratings that won't drop power to other appliances. In fact, depending on your electrical requirements, you may find that a smaller generator with a high starting rating will work for you.



ESTIMATE YOUR POWER NEEDS

Here's a quick tool to "ballpark" the right size KOHLER® generator for your home or business. The best way to determine your specific power needs is to ask your generator professional to perform a site survey. He or she will analyze your electrical load and specify and install the proper generator system.



YOUR ELECTRICAL NEEDS	10–14 kW	15–25 kW	26–48 kW	49–150 kW
Furnace fan	x	x	x	
Refrigerator/freezer	x	x	x	
Sump pump	x	x	x	
Lighting	x	x	x	
Well pump	x	x	x	
Television/radio	x	x	x	
Computer	x	x	x	
Garage door opener	x	x	x	For greater than 200-amp service in larger homes and small businesses
Security system	x	x	x	
Central air system	x	x	x	
Water heater		x	x	
Washing machine		x	x	
Electric range		x	x	
Clothes dryer			x	
Dishwasher			x	
Microwave oven			x	
Toaster oven			x	
Extensive power requirements			x	

This chart provides a rough sizing estimate. As always, the best way to determine your specific power needs is to consult a licensed electrical contractor. Visit KohlerGenerators.com for a sizing calculator to determine your needs.

FIND YOUR PERFECT GENERATOR



MODEL	10RESV	12RESV
Rated Power Lpg (Liquid Propane)/Ng (Natural Gas) (Kw)	10/9	12/11
Voltage @ 60 Hz Single-Phase	120/240	
Amps Lpg/Ng @ 240 V Single-Phase	41.7/37.5	50/45.8
Engine/Alternator Rpm	3600	
Three-Phase Available	No	
Engine	725 cc	
	21.4 hp	
	KOHLER 7000 Series OHV KT725	
	V-Twin	
Peak Motor Starting kVA at 240 V	16.8 kVA	
Fuel	LPG/NG	
Engine Cooling	Air-Cooled	
Enclosure	Steel	
Single-Point Sound Output dBA at 23 ft. (during exercise/normal operation)*	64/69	
Dimensions (L x W x H) in.	28 x 30 x 32	
Digital Voltage Regulation	+/- 1.0%	
Warranty	5-Year Limited	



10 kW



12 kW (12RESV)

RATINGS: Standby ratings apply to installations served by a reliable utility source. All single-phase units are rated at 1.0 power factor. The standby rating is applicable to variable loads with an average load factor of 80% for the duration of the power outage. No overload capacity is specified at this rating. Ratings are in accordance with ISO-3046/1, BS5514, AS2789 and DIN 6271.

*Single-point sound levels are the lowest of 8 point measured around the generator. 14RCA and 20RCA sound levels are measured at the front of the generator. Actual sound levels may vary based on installation parameters.

MODEL	12RES
Rated Power LPG (Liquid Propane)/NG (Natural Gas) (kW)	12/10.4
Voltage @ 60 Hz Single-Phase	120/240
Amps LPG/NG @ 240 V Single-Phase	50/43
Engine/Alternator rpm	3600
Three-Phase Available	No
Engine	721 cc
	23.6 hp
	KOHLER Command PRO OHV CH740
	V-Twin
	Hydraulic Valve Lifters
Peak Motor Starting kVA at 240 V	32 kVA
Fuel	LPG/NG
Engine Cooling	Air-Cooled
Enclosure	Steel
Single-Point Sound Output dBA at 23 ft. (during exercise/normal operation)*	63
Dimensions (L x W x H) in.	44 x 29 x 32
Digital Voltage Regulation	+/-1.5%
Response Time	10 Seconds
Warranty	5-Year Limited [†]



12 kW (12RES)

RATINGS: Standby ratings apply to installations served by a reliable utility source. All single-phase units are rated at 1.0 power factor. The standby rating is applicable to variable loads with an average load factor of 80% for the duration of the power outage. No overload capacity is specified at this rating. Ratings are in accordance with ISO--3046/1, BS5514, AS2789 and DIN 6271.

*Single-point sound levels are compared to competitive ratings. Lowest of 8 points measured around the generator. Sound levels at other points around generator may be higher depending on installation. [†]Non-standby warranty of 18 months or 1000 hours available on 12RES, 14RCA and 14RESA.

MODEL	14RCA	20RCA
Rated Power LPG (Liquid Propane)/NG (Natural Gas) (kW)	14/12	20/18
Voltage @ 60 Hz Single-Phase	120/240	
Amps LPG/NG @ 240 V Single-Phase	58/50	83/75
Engine/Alternator rpm	3600	
Three-Phase Available	Yes	
Engine	725 cc 23.6 hp KOHLER Command PRO OHV CH740	999 cc 30.9 hp KOHLER Command PRO OHV CH1000
	V-Twin	
	Hydraulic Valve Lifters	
Peak Motor Starting kVA at 240 V	33 kVA	41 kVA
Fuel	LPG/NG	
Engine Cooling	Air-Cooled	
Enclosure	Corrosion-Resistant Aluminum	
Single-Point Sound Output dBA at 23 ft. (during exercise/normal operation)†	62/67	64/69
Dimensions (L x W x H) in.	47 x 26 x 32	
Digital Voltage Regulation	+/- 1.0%	
Response Time	10 Seconds	
Warranty	5-Year Limited‡	



14 kW



20 kW

RATINGS: Standby ratings apply to installations served by a reliable utility source. All single-phase units are rated at 1.0 power factor. The standby rating is applicable to variable loads with an average load factor of 80% for the duration of the power outage. No overload capacity is specified at this rating. Ratings are in accordance with ISO--3046/1, BS5514, AS2789 and DIN 6271.

*8-point logarithmic average. †Single-point sound levels are compared to competitive ratings. Lowest of 8 points measured around the generator. Sound levels at other points around generator may be higher depending on installation. ‡Non-standby warranty of 18 months or 1000 hours available on 12RES 14RESA and 14RCA.

MODEL	14RESA	20RESC
Rated Power LPG (Liquid Propane)/NG (Natural Gas) (kW)	14/12	20/18
Voltage @ 60 Hz Single-Phase	120/240	
Amps LPG/NG @ 240 V Single-Phase	58/50	83/75
Engine/Alternator rpm	3600	
Three-Phase Available	Yes	
Engine	725 cc	999 cc
	23.6 hp	30.9 hp
	KOHLER Command PRO OHV CH740	KOHLER Command PRO OHV CH1000
	V-Twin	
	Hydraulic Valve Lifters	
Peak Motor Starting kVA at 240 V	33 kVA	41 kVA
Fuel	LPG/NG	
Engine Cooling	Air-Cooled	
Enclosure	100% Corrosion-Proof Composite	
Single-Point Sound Output dBA at 23 ft. (during exercise/normal operation)*	58/63	62/67
Dimensions (L x W x H) in.	48 x 26 x 29	
Digital Voltage Regulation	+/- 1.0%	
Response Time	10 Seconds	
Warranty	5-Year Limited†	



14 kW



20 kW

RATINGS: Standby ratings apply to installations served by a reliable utility source. All single-phase units are rated at 1.0 power factor. The standby rating is applicable to variable loads with an average load factor of 80% for the duration of the power outage. No overload capacity is specified at this rating. Ratings are in accordance with ISO--3046/1, BS5514, AS2789 and DIN 6271.

*Single-point sound levels are compared to competitive ratings. Lowest of 8 points measured around the generator. Sound levels at other points around generator may be higher depending on installation. †Non-standby warranty of 18 months or 1000 hours available on 12RES, 14RCA and 14ESA.

MODEL	24RCL	30RCL
Rated Power LPG (Liquid Propane)/NG (Natural Gas) (kW)	24/21	30/30
Voltage @ 60 Hz Single-Phase	120/240	
Amps LPG/NG @ 240 V Single-Phase	100/87	125/125
Engine/Alternator rpm	1800	
Three-Phase Available	Yes	
Engine	2.2 L	2.2 L Turbo
	39 hp	64 hp
	KOHLER KG2204 Naturally Aspirated	KOHLER KG2204T Turbo
	In-Line 4	
	Hydraulic Valve Lifters	
Peak Motor Starting kVA at 240 V	37 kVA	44 kVA
Fuel	LPG/NG	
Engine Cooling	Liquid-Cooled	
Enclosure	Corrosion-Resistant Aluminum	
Single-Point Sound Output dBA at 23 ft. (during exercise/normal operation)*	53/60	54/61
Dimensions (L x W x H) in.	74 x 33 x 45	
Digital Voltage Regulation	+/- 1.0%	
Response Time	10 Seconds	
Warranty	5-Year Limited	



24 kW



30 kW

RATINGS: Standby ratings apply to installations served by a reliable utility source. All single-phase units are rated at 1.0 power factor. The standby rating is applicable to variable loads with an average load factor of 80% for the duration of the power outage. No overload capacity is specified at this rating. Ratings are in accordance with ISO--3046/1, BS5514, AS2789 and DIN 6271.

*Single-point sound levels are compared to competitive ratings. Lowest of 8 points measured around the generator. Sound levels at other points around generator may be higher depending on installation.

MODEL	38RCLB	48RCLB
Rated Power LPG (Liquid Propane)/NG (Natural Gas) (kW)	38/38	48/48
Voltage @ 60 Hz Single-Phase	120/240	
Amps LPG/NG @ 240 V Single-Phase	158/158	200/200
Engine/Alternator rpm	1800	
Three-Phase Available	Yes	
Engine	2.2 L Turbo	6.2 L
	75 hp	103 hp
	KOHLER KG2204T Turbo	KOHLER KG6208 6.2L NA
	In-Line 4	V-8
	Hydraulic Valve Lifters	
Peak Motor Starting kVA at 240 V	74 kVA	113 kVA
Fuel	LPG/NG	
Engine Cooling	Liquid-Cooled	
Enclosure	Corrosion-Resistant Aluminum	
Single-Point Sound Output dBA at 23 ft. (during exercise/normal operation)*	54/61	57/61
Dimensions (L x W x H) in.	74 x 33 x 45	90 x 33 x 47
Digital Voltage Regulation	+/- 1.0%	
Response Time	10 Seconds	
Warranty	5-Year Limited	



38 kW



48 kW

RATINGS: Standby ratings apply to installations served by a reliable utility source. All single-phase units are rated at 1.0 power factor. The standby rating is applicable to variable loads with an average load factor of 80% for the duration of the power outage. No overload capacity is specified at this rating. Ratings are in accordance with ISO--3046/1, BS5514, AS2789 and DIN 6271.

*Single-point sound levels are compared to competitive ratings. Lowest of 8 points measured around the generator. Sound levels at other points around generator may be higher depending on installation.

MODEL	60RCLA
Rated Power LPG (Liquid Propane)/NG (Natural Gas) (kW)	60/58
Voltage @ 60 Hz Single-Phase	120/240
Amps LPG/NG @ 240 V Single-Phase	250/242
Engine/Alternator rpm	1800
Three-Phase Available	Yes
Engine	6.2 L
	103 hp
	KOHLER KG6208 6.2L NA
	Hydraulic Valve Lifters
Peak Motor Starting kVA at 240 V	144 kVA
Fuel	LPG/NG
Engine Cooling	Liquid-Cooled
Enclosure	Corrosion-Resistant Aluminum
Single-Point Sound Output dBA at 23 ft. (during exercise/normal operation)*	57/61
Dimensions (L x W x H) in.	90 x 33 x 47
Digital Voltage Regulation	+/- 1%
Response Time	10 Seconds
Warranty	5-Year Limited



60 kW

RATINGS: Standby ratings apply to installations served by a reliable utility source. All single-phase units are rated at 1.0 power factor. The standby rating is applicable to variable loads with an average load factor of 80% for the duration of the power outage. No overload capacity is specified at this rating. Ratings are in accordance with ISO--3046/1, BS5514, AS2789 and DIN 6271.

*Single-point sound levels are compared to competitive ratings. Lowest of 8 points measured around the generator. Sound levels at other points around generator may be higher depending on installation.

MODEL	KG80R	KG100R
Rated Power LPG (Liquid Propane)/NG (Natural Gas) (kW)	80/80	100/100
Voltage @ 60 Hz Single-Phase	120/240	
Amps LPG/NG @ 240 V Single-Phase	334/334	417/417
Engine/Alternator rpm	1800	
Three-Phase Available	Yes	
Engine	6.2 L Turbo	
	133 hp	173 hp
	KOHLER KG6208 TA	
	Turbocharged / Aftercooled V-8 Hydraulic Valve Lifters	
Peak Motor Starting kVA at 240 V	237 kVA	440 kVA
Fuel	LPG/NG	
Engine Cooling	Liquid-Cooled	
Enclosure	Steel (Aluminum Also Available)	
Single-Point Sound Output dBA at 23 ft. (during exercise/normal operation)*	64/69	
Dimensions (L x W x H) in.	138 x 52.8 x 76.7	
Digital Voltage Regulation	+/- 0.5%	
Response Time	10 Seconds	
Warranty	5-Year Limited [†]	



80 kW



100 kW

RATINGS: Standby ratings apply to installations served by a reliable utility source. All single-phase units are rated at 1.0 power factor. The standby rating is applicable to variable loads with an average load factor of 80% for the duration of the power outage. No overload capacity is specified at this rating. Ratings are in accordance with ISO--3046/1, BS5514, AS2789 and DIN 6271.

*Single-point sound levels are compared to competitive ratings. Lowest of 8 points measured around the generator. Sound levels at other points around generator may be higher depending on installation. [†]5-year warranty is an included option for quick ship 80- to 150-kW models.

MODEL	KG125R	150ERESC
Rated Power LPG (Liquid Propane)/NG (Natural Gas) (kW)	105/125	134/144
Voltage @ 60 Hz Single-Phase	120/240	
Amps LPG/NG @ 240 V Single-Phase	438/521	567/600
Engine/Alternator rpm	1800	
Three-Phase Available	Yes	
Engine	6.2 L Turbo	8.8 L Turbo
	201 hp	259 hp
	KOHLER KG10V08T Turbocharged	General Motors Vortec V-8
	Hydraulic Valve Lifters	
Peak Motor Starting kVA at 240 V	440 kVA	
Fuel	LPG/NG	
Engine Cooling	Liquid-Cooled	
Enclosure	Steel (Aluminum Also Available)	
Single-Point Sound Output dBA at 23 ft. (during exercise/normal operation)*	64/69	NA/72
Dimensions (L x W x H) in.	138 x 52.8 x 76.7	139 x 45 x 66
Digital Voltage Regulation	+/- 0.5%	
Response Time	10 Seconds	
Warranty	5-Year Limited†	



125 kW



150 kW

RATINGS: Standby ratings apply to installations served by a reliable utility source. All single-phase units are rated at 1.0 power factor. The standby rating is applicable to variable loads with an average load factor of 80% for the duration of the power outage. No overload capacity is specified at this rating. Ratings are in accordance with ISO--3046/1, BS5514, AS2789 and DIN 6271.

*Single-point sound levels are compared to competitive ratings. Lowest of 8 points measured around the generator. Sound levels at other points around generator may be higher depending on installation. †5-year warranty is an included option for quick ship 80- to 150-kW models.

KOHLER® GENERATORS TRUSTED WORLDWIDE FOR A CENTURY

We built our first generator in 1920. Today, homes, businesses, hospitals, nuclear power plants – even the National Weather Service – trust in hard-working, long-lasting KOHLER generators.



Light for bright and early rising

"I AM pleased extremely with my Kohler Automatic, as it is doing fine work. In addition to lighting my home, barn, sheds, etc., I am operating my water pump and furnishing water to my herd of cattle."
"Operating costs are very moderate, and the unit is one of the most dependable friends I have. This letter does not begin to express my appreciation for the work this machine is doing for me."
 [Signed] G. W. McConville,
 R. F. D. No. 2, New Bedford, Mass.

COLD gray dawn melts away before the bright and cheery light of Kohler Electricity. Better appetites attack better breakfasts, and the day starts right.

Perhaps there's an electric coffee-percolator at your elbow; or a toaster; or a grill—saving fussing over the stove—making breakfast an event!

With breakfast over, the Kohler Automatic has just begun its day's work for you. No water to jug. The Kohler Automatic has already tended to that without your knowing. No lamps and lanterns to clean and fill. And who is going to worry about the washing and ironing when this real electric plant

is ready any minute to supply the current that takes the place of arm-and-back power and stove heat?

Wait until you have actually seen the Kohler Automatic Electric Plant at work. Then only can you begin to realize how easily it does all these things—and *a lot more*; how little care it takes; how little fuel it consumes; and what an all-around worker and helper it is.

No other plant offers this combination of proved advantages:—elimination of the usual storage-battery care and expense; far-carrying 110-volt current, insuring brilliant, steady light and powerful power; press-the-button operation—no running to the plant—thanks to the automobile-type starting battery and wonderful automatic switch.

Real electricity, always on tap, night and day! Find out about the plant which will bring it to your farm. Models for all needs are moderately priced and sold on convenient terms. Mail the coupon below for full information.



Kohler Automatic Model D
 100-1441 110-volt, D. C.

Kohler Co., Founded 1873, Kohler, Wisconsin • Shipping Point, Sheboygan, Wisconsin
 MANUFACTURERS OF ENAMELED PLUMBING WARE

ATLANTA..... 24 South Pine St.	KANSAS CITY..... 1123 Wyandotte St.	PHILADELPHIA..... 3rd and Center Sts.
BOSTON..... 245 N. South Street	MINNEAPOLIS..... 222 4th St. South	PITTSBURGH..... 414 First Ave.
CHICAGO..... 222 N. Dearborn Street	NEW YORK..... 210 West 43rd St.	ST. LOUIS..... 224-226 Grand Blvd.
DETROIT..... 12 Park Ave.	OKLAHOMA..... 218 Grand St.	ST. FRANCISCO..... 240 Post St.
INDIANAPOLIS..... 127 North Dearborn St.	OMAHA..... 207 Jackson St.	SEATTLE..... 111 Union St.
		LONDON, ENGLAND..... 25, Great Portland St.

KOHLER of KOHLER

Automatic Electric Plants—110 Volt D.C.
 No Storage Batteries

Send Coupon for FREE 48-page Book
 Kohler Co., Kohler, Wis., U.S.A.
 Gentlemen, Please send me the Kohler Automatic booklet, "The Principle and The Proof."
 Name _____
 Street or R. F. D. _____
 City, State _____
 Use in which intended _____ CIG 11-48

1925



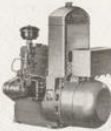
**KOHLER ELECTRIC PLANTS . . . Reliable current
for convenience, comfort and protection**



A KOHLER Electric Plant in your summer home, lodge, or cottage, will add immeasurably to your comfort, convenience, and pleasure. Thrifty, compact, and fully automatic, a Kohler Plant will provide the current you need for lights, inside and out, running water, refrigeration, radio, small tools, and appliances such as electric fans, toasters, and other equipment that make life easy. Think of the time you'll save, the problems you'll solve, the convenience you'll enjoy by having these advantages at the flip of a switch!

Kohler Electric Plants have a remarkable reputation for giving long years of trouble-free service. This established reliability has made them favorites not only for homes, farms, and rural enterprises, but also for night-lighting construction jobs, oil well operations, and fire-fighting trucks. For emergency service, Kohler Plants are considered essential equipment in hospitals, schools, police radio stations, homes, factories and other places where current failure might cause hazard, or loss of revenue.

Kohler Plants range in size from 800 watts to 10 kilowatts. They are built to the standards of high quality that have been a Kohler tradition for 73 years. Write for full information. Kohler Co., Dept. 4-N, Kohler, Wisconsin.



*Kohler Electric Plant
Model 1E1, 1500 watts,
115 volt AC. Fully auto-
matic. Also available for DC.*

KOHLER OF KOHLER

ELECTRIC PLANTS • PLANNED PLUMBING AND HEATING

1946



*Low-cost, portable
electricity...*
**KOHLER
ELECTRIC PLANT**

Take your own electricity to camp, cabin, hunting or fishing lodge, country home. Provides current for lights, radio, fan. Source of portable power. Operates saws, drills, pipe cutters and threaders. Weighs only 70 lbs. Convenient handle for easy carrying. Fits in trunk of car. Powered by easy-starting, 4-cycle, air-cooled Kohler engine. Complete with 1/2 gallon fuel tank. Thousands in use. Other sizes available. Write today for descriptive folder. Kohler Co., Kohler, Wisconsin.

*Model 350M21-K7, 350 watts, 115 volt AC.
Manual control. Length 18", width 12", height 17".*

KOHLER OF KOHLER

PLUMBING FIXTURES • HEATING EQUIPMENT • ELECTRIC PLANTS • AIR COOLED ENGINES

1960

KOHLER[®]
IN POWER. SINCE 1920.

KOHLERGENERATORS.COM

PRINTED IN U.S.A. 27692-02 G12-434 10/21 © 2021 KOHLER CO.