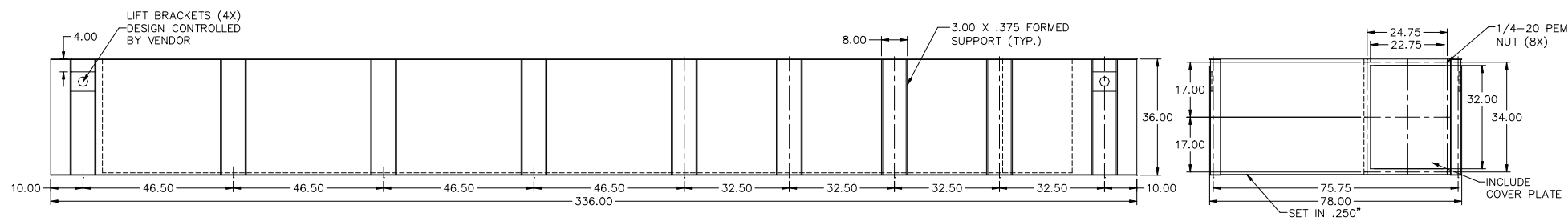
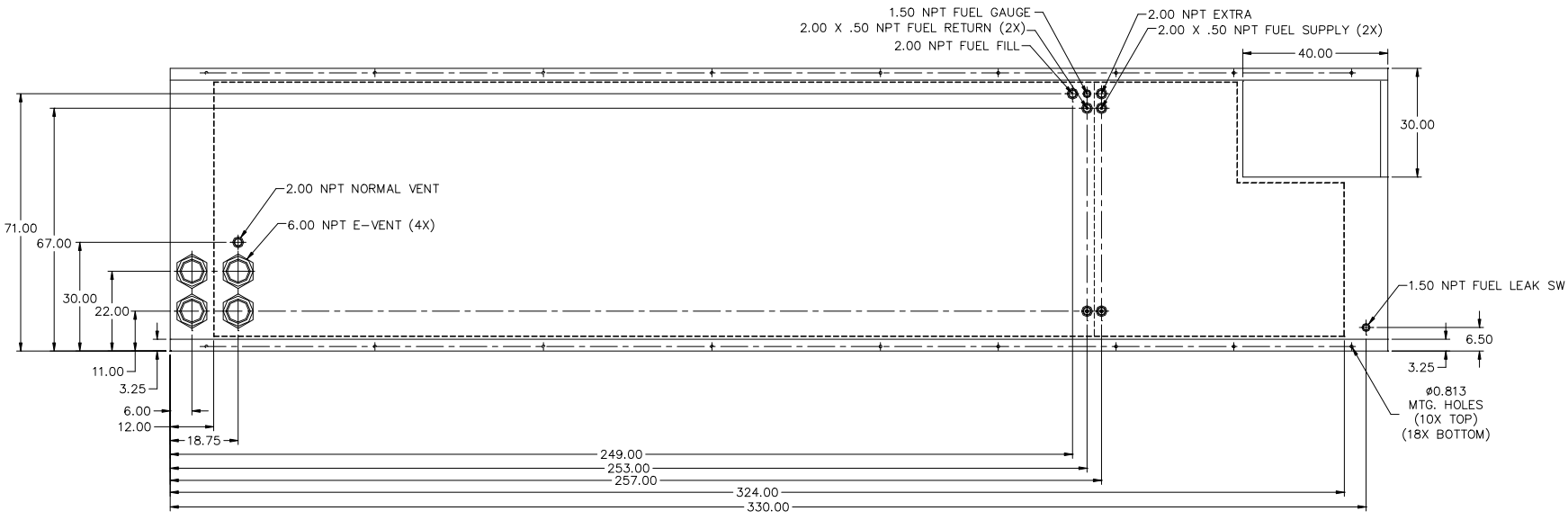


**72HR TANK**  
**TD550-01, TD600-01**  
**VD600-01**  
**PD550-01, PD600-01**  
**LV0/LV1/LV2/LV3**



APPROXIMATE WEIGHT: 7600 LBS

- NOTES:  
 1. MATERIAL: 7GA. RUPTURE BASIN  
               7GA. INNER TANK  
 2. SECONDARY CONTAINMENT TANK  
 3. FINISH PAINT GLOSS BLACK  
 4. TANK TO INCLUDE  
    - FUEL SUPPLY / RETURN DIP TUBES  
    - LIFTING / TIE DOWN BRACKETS

REVISIONS:			
LEVEL:	DESCRIPTION:	DATE:	BY:
01	MOVE MOUNTING HOLES, EXPAND STUB-UP	05/24/19	ATB



**TANK SB 3000GL DW UL W/STUB-UP**

P/N: 20809    336"L X 78"W X 36"H

DATE: 10-10-17    BY: KAP    DRAWN TO SCALE